



TAYLOR-DUNN®

Commercial and Industrial Vehicles Since 1949

Operator's Manual *2018 BIGFOOT G-1500*



The best way to go about your business

Serial Number Range:

Starting: 209617

Ending: See Introduction

Use with Model Numbers:

B5-440-GAS



WARNING

READ THIS MANUAL BEFORE OPERATION OR PERFORMING MAINTENANCE.

This manual contains important information regarding the safe operation and maintenance of this vehicle. This manual shall be kept with the vehicle.

My Vehicle information

Vehicle Serial Number: _____.

Engine Model Number: _____.

Engine Serial Number: _____.

Date Purchased: _____.

Date Delivered: _____.

Dealer Purchased From: _____.

Salesman Name: _____.

Your satisfaction is our #1 goal. If you have questions or concerns with your vehicle, please contact your sales Representative or Service Advisor at your local dealership. Taylor-Dunn has a worldwide dealer and distribution network to provide replacement parts and service for our vehicles. Refer to our web site, www.taylor-dunn.com, for a dealer lookup application.



Originally Published 7/16/2018
Revision B, 8/13/2018, contents subject to change without notice
Taylor-Dunn® Mfg.
2114 W. Ball Rd.
Anaheim, CA 92804
(800)-688-8680
(714) 956-4040
(FAX) (714) 956-0504

Visit our Web site: www.taylor-dunn.com



CONTACT INFORMATION

Service, Parts, Sales:

Taylor-Dunn has a network of dealers distributed around the globe to support our vehicles. Information regarding vehicle sales, replacement parts, or service should be obtained through your local dealer.

A dealer locator can be found on the Taylor-Dunn website at www.taylor-dunn.com.

If you do not have access to the internet, you can call the factory direct at:

01 (714) 956-4040

Feedback regarding this or any Taylor-Dunn manual can be sent to:

Taylor-Dunn Manufacturing
Attn: Tech Writer
2114 West Ball Road
Anaheim, CA 92804



The Taylor-Dunn Corporation:

Leading Provider of Commercial & Industrial Vehicles since 1949

Taylor-Dunn Manufacturing:

From the day we shipped our first vehicle in 1949, we have pursued a singular goal: to build tough, rugged, dependable vehicles to help our customers move personnel, equipment, and materials. It's that simple. For over sixty years, our standard and custom vehicles - Burden Carriers, Personnel Carriers, Stock Chasers, Electric Carts, Tow Tractors & more - have been the leading solution for customers in a broad range of industrial, commercial, and ground-support markets.

Decades of experience are an invaluable asset, and it is an asset we cherish and protect. Our guiding principle is to provide application-specific solutions, which are reliable, efficient, and economical.

Our domestic and international network of quality Taylor-Dunn Dealers and Parts & Service Support keeps our customers moving.

Tiger Tractor:

Tiger manufacturing has become a leading manufacturer of internal combustion engine industrial tractors and ground support equipment. With tractor capacities ranging from 3,000 - 12,000 pounds drawbar pull, they are ideal for industrial applications as well as aircraft ground support. As with all Taylor-Dunn vehicles; quality, service, support and reliability are built into all Tiger Tractor products.

Shown below is just a small sample of what Taylor-Dunn has to offer to keep your business moving:



Table of Contents

Contact Information	3	1: Ignition Switch	19
The Taylor-Dunn Corporation:	4	2: Fuel Gauge	19
<u>Introduction</u>	<u>7</u>	3: Engine Hour Meter.....	19
Who Should Read This Manual	7	4: Headlight Switch	19
About This Manual	7	5: Wiper Switch	19
Glossary of Terms.....	8	6: Beacon or Strobe Switch	19
Conventions	9	7: Low Oil Light	19
Signal Words and Their Definitions:.....	9	Throttle Pedal.....	20
Safety Alert Message	9	Foot Brake Pedal	20
Responsibilities	10	Parking Brake	20
Of the Owner.....	10	Horn Switch.....	20
Of the Operator.....	10	Shift Lever.....	20
Of the Passengers	10	Choke.....	20
Of the Service Personnel.....	10	Seat Adjust.....	20
Vehicle Modifications.....	11	Directional Signals	21
Replacement Parts	12	Hazard Light Switch	21
Using Non-Taylor-Dunn Replacement		Steering	21
Components.....	12	Operator Presence Switch	21
Emissions Warranty.....	13	<u>Vehicle Operation</u>	<u>22</u>
Manufacturer's Warranty Coverage:	13	General Safety Guidelines	22
General Emissions Warranty Coverage:		Seat Belts (optional).....	24
13		All Seat Belt Types	25
Warranted Parts:	14	Combination Lap and Shoulder Belts ..	25
<u>About Your Vehicle</u>	<u>15</u>	Lap Belts Only.....	25
Licensing Requirements	15	Seat Belts While Pregnant.....	25
How to Identify Your Vehicle	16	Seat Belt Maintenance	25
Data Plate	16	Starting the Engine	26
Where to Find Data Plate and Serial		Driving	28
Number	16	Collisions or Accidents	29
<u>Taking Delivery</u>	<u>17</u>	Transporting Pets.....	29
If a Problem is Found	17	Vehicle Load Capacity, Definition.....	30
<u>Operator Training</u>	<u>18</u>	Loading Cargo	31
Driver Qualifications	18	Transporting Pets.....	31
<u>Vehicle Controls</u>	<u>19</u>	<u>Towing</u>	<u>32</u>
		Draw Bar Pull (DBP), Definition	32
		Towing the Vehicle	33
		<u>Engine Fuel</u>	<u>34</u>
		Approved Fuels.....	35
		Refueling	36
		<u>Vehicle Maintenance</u>	<u>37</u>
		Daily Inspection.....	37
		Pre-Operation Inspection	37
		<u>Interlock Switch Inspection.....</u>	<u>38</u>
		Neutral Start Switch	38
		Operator Presence Switch	38
		Maintenance Schedule	39
		Maintenance Guidelines for Severe Duty	
		Applications.....	39

Fluid Levels.....	40
Engine Oil	40
Engine Coolant	40
Air Filter	41
<u>Battery Maintenance</u>	<u>42</u>
Cleaning	43
Watering	43
Charging	43
Tires	44
Air pressure	44
Tire Tread Wear	44
Changing a Tire/Wheel assembly	45
Tire Rotation	46
Replacing a Tire	46
Cleaning	47
Glass	47
Plastic Windows	47
Seats / Soft Doors	47
Interior	47
Exterior Body	47
Cleaning the Seat Belts	47
Under Carriage	47
Battery	47
Storing and Returning to Service	47
<u>Standard Specifications</u>	<u>48</u>
<u>Index</u>	<u>49</u>

Introduction

Who Should Read This Manual

This manual is intended for use by anyone operating or performing routine maintenance on this vehicle. Each person shall be familiar with the parts of this manual that apply to their use of this vehicle.

About This Manual

This manual is valid only for the serial numbers listed on the front cover. If the ending serial number is blank, then this manual was for current production 2018 model vehicles when printed. If you did not receive this manual with the vehicle, you should confirm this manual is valid for your serial number at the Taylor-Dunn web site. A place to record your vehicle information is provided on the inside front cover

This manual is subject to change without notice. Updates are available through your dealer or the Taylor-Dunn web site at www.taylor-dunn.com.

Taylor-Dunn is not to be held liable for errors in this manual or any consequential damage that results from the use of this manual.

The purchase of this vehicle shows a belief in high quality products manufactured in the USA.

Taylor-Dunn, a leading manufacturer of electric burden carriers, personnel carriers, and tow tractors since 1949, wants to be sure this vehicle provides years of reliable service. Please continue to read this manual and enjoy this high quality Taylor-Dunn vehicle.

This manual is to serve as a guide for the operation and maintenance of your Taylor-Dunn vehicle. Taylor-Dunn has made every effort to include as much information as possible about the operation and maintenance of this vehicle.

This manual contains information about the standard equipment and options available for this model. This vehicle may not be equipped with all available options. If you do not know which information applies to your vehicle, then you should contact your dealer.

Included in this manual are:

- Vehicle Description
- Safety Rules and Guidelines
- Operational Information
- Operator Responsibilities
- Owner Responsibilities
- Control Operation and Location Information
- Maintenance Information

Before operating or performing maintenance on this or any other Taylor-Dunn vehicle, read the appropriate Taylor-Dunn manual.

Please, be aware of all cautions, warnings, instructions, and notes contained in this manual.

WARNING

The only personnel authorized to repair, modify, or adjust any part of this or any Taylor-Dunn vehicle is a factory authorized service technician. Repairs made by unauthorized personnel may result in damage to the vehicles systems which could lead to an unsafe condition resulting in severe bodily injury and/or property damage. Unauthorized repairs may also void the vehicles warranty.

GLOSSARY OF TERMS

There are a number of words and phrases used in this document that may have a different, special, or specific definition when use in the context of this document.

Approved Operator Position	The operator shall be seated in the operator seat with back up against the operator seat back cushion. Additional back support may be added as needed. The back support shall be fastened to the operator seat back cushion to prevent it from falling off the vehicle or onto the seat cushion. The operator's left foot shall be on the floorboard. The right foot should be positioned for easy access to the brake or throttle pedals. Both hands should be on the steering wheel while the vehicle is in motion.
Caution (signal word)	Refer to Signal Words and Their Definitions.
Danger (signal word)	Refer to Signal Words and Their Definitions.
DBP	Draw Bar Pull (see below).
Draw bar pull	The force seen by the trailer hitch at the rear of the vehicle.
Electrolyte	The fluid inside of a battery.
Moderate injury	An injury treatable by first aid and/or follow up treatment by a doctor or other professional medical personnel.
Notice (signal word)	Refer to Signal Words and Their Definitions.
OPS	"Operator Protective Structure": Steel cab or cage around the occupants.
Seating position:	When used in the context of occupant seating positions, "seat" is defined as a single seat cushion or a span of 20 inches on a bench seat.
Service Brake	The primary braking system used to stop the vehicle.
Severe bodily injury	An injury that requires immediate treatment by a doctor or other professional medical personnel. Not first aid.
Signal word	A word used to define hazards to operator, passengers, service technician, or personnel in the immediate vicinity of the vehicle.
Small children	Children that must be transported in a child seat as defined by federal or state motor vehicle standards.
Warning (signal word):	Refer to Signal Words and Their Definitions.

CONVENTIONS

Symbols and/or words used to define Dangers, Warnings, Cautions, and Notices are found throughout this manual. The “Words” in this context will be referred to as “Signal words.” The words defined here as “signal words” may be used elsewhere in the text of this document without being a signal word. When used as a signal word, the signal word will be enclosed in a solid rectangle with white background (example below).

Signal Words and Their Definitions:

DANGER: This signal word will be accompanied by the safety alert symbol (see below). “DANGER” will indicate a hazard that, if not avoided, WILL result in death or serious bodily injury to yourself, the operator or passengers of the vehicle, or people in the immediate area of the vehicle.

WARNING: This signal word will be accompanied by the safety alert symbol (see below). “WARNING” will indicate a hazard that, if not avoided, may result in death or serious bodily injury to yourself, the operator or passengers of the vehicle, or people in the immediate area of the vehicle.

CAUTION: This signal word will be accompanied by the safety alert symbol (see below). “CAUTION” will indicate a hazard that, if not avoided, may result in minor or moderate injury to yourself, the operator or passengers of the vehicle, or people in the immediate area of the vehicle.

NOTICE: This signal word will not be accompanied by the safety alert symbol. “NOTICE” will indicate a condition that if not avoided may result in property damage. “Property” is defined and the vehicle, components in the vehicle and/or the surrounding area such as buildings, other vehicles, etc.

Safety Alert Message


Important information notifying you of any conditions that may result in hazards to yourself, persons nearby, and/or hazards to the vehicle will be presented in a text box with a black border and may include a signal word (see above). To the right is an example of a safety message.

The safety message may include additional warning icons representing the type of hazard. Below is a list of these icons and what they represent. These icons may also be included on the various warning and information decals applied to the vehicle.





This is an example of a safety alert message. This message will contain information about a hazard and/or instructions on avoiding a hazard. The actual size, location, and signal word used for the message box may vary.


Decals applied to the vehicle may have other icons representing their function. The icons and their definitions are listed below:


 Safety alert symbol (see above).

 High voltage hazard.

 Explosion hazard.

 Corrosive chemical hazard.

 Fire hazard.

 Poisonous chemical hazard.



Read the operators manual.



Read the maintenance manual.



Keep arms and legs inside the vehicle.



Parking brake ON.



Parking brake OFF.



Do not get wet.



Do not spray wash.

RESPONSIBILITIES

Of the Owner...

The owner of this or any Taylor-Dunn vehicle is responsible for the overall maintenance and repairs of the vehicle, as well as the training of operators.

The owner is responsible for operator training. Refer to Driver Training section for details.

The owner shall provide a copy of this manual if rented or loaned to another party and instruct the other party to read and understand the contents of this manual.

The owner shall provide a copy of this manual when and if the vehicle is transferred to another party.

Of the Operator...

All operators shall complete an operator training course provided by the owner of the vehicle.

The operator is responsible for the proper use of the vehicle on authorized roads, highways, and approved installations only.

The operator is responsible to confirm that all passengers are properly seated and properly using the available restraints.

The operator is responsible for the safe operation of the vehicle, preoperational and operational checks on the vehicle, and the reporting of any problems to service and repair personnel.

Of the Passengers ...

The passengers are responsible to remain fully seated, keeping their hands, arms, and legs inside the vehicle at all times. Each passenger shall be fully aware of the vehicle's operation. All forms of recklessness are to be avoided.

Of the Service Personnel...

The service personnel are responsible for the service and maintenance of the vehicle. At no time shall a service person allow any untrained personnel to service or repair this or any Taylor-Dunn vehicle. For the purposes of training, a qualified service person may oversee the repairs or services being made to a vehicle by an individual in training. At no time shall an untrained individual be allowed to service or repair a vehicle without supervision. This manual is not a training guide.

Personnel performing service and repair shall have knowledge of:

- Basic standard automotive repair procedures
- Basic DC electrical theory
- Basic operation of internal combustion engines (gasoline, LPG, Diesel)
- Use of digital and analog multi-meters
- Lead acid batteries

Personnel performing maintenance shall have basic knowledge of standard automotive maintenance procedures and lead acid batteries.



WARNING

The only personnel authorized to repair, modify, or adjust any part of this or any Taylor-Dunn vehicle is a factory authorized service technician. Repairs made by unauthorized personnel may result in damage to the vehicles systems which could lead to an unsafe condition resulting in severe bodily injury and/or property damage. Unauthorized repairs may also void the vehicles warranty.

VEHICLE MODIFICATIONS

Taylor-Dunn vehicles are designed and manufactured in accordance with ANSI/ITSDF and OSHA regulations. Per ANSI/ITSDF and OSHA, modifications to the vehicle must be approved by the manufacturer. Listed below are the specific regulations:

ANSI/ITSDF 56.8-2006 Personnel and Burden Carriers

Paragraph 8.2q:

Modifications and additions which affect capacity and safe machine operation shall not be performed by the customer or user without manufacturer's prior written authorization; where authorized modifications have been made, the user shall ensure that capacity, operation, warning, and maintenance instructions plates, tags, or decals are changed accordingly.

Paragraph 8.2r:

Care shall be taken to ensure that all replacement parts are interchangeable with the original parts and of a quality at least equal to that provided in the original equipment.

Code of Federal Regulations (CFR) Title 29, Subtitle B, Chapter XVII OSHA, Part 1910.178 Powered Industrial Trucks (2011)

1910.178(a)(4)

Modifications and additions which affect capacity and safe operation shall not be performed by the customer or user without manufacturer's prior written approval. Capacity, operation, and maintenance instruction plates, tags, or decals shall be changed accordingly.

1910.178(q)(6)

Industrial trucks shall not be altered so that the relative positions of the various parts are different from what they were when originally received from the manufacturer, nor shall they be altered either by the addition of extra parts not provided by the manufacturer or by the elimination of any parts, except as provided in paragraph (q)(12) of this section. Additional counterweighting of fork trucks shall not be done unless approved by the truck manufacturer.

WARNING

When welding to the vehicle:

- **Do not weld onto any fuel tanks, electrical control components, engine, or transmission.**
- **Welding shall be performed by qualified welders.**
- **Disconnect the battery.**
- **Disconnect all wires from other electronic modules.**
- **Disconnect all wires from the engine control systems.**
- **Disconnect all wires from the transmission control module.**
- **Connect welding cable directly to the frame, do not connect to any control components.**
- **Welding emits showers of sparks. Protect all fuel system components, engine intake and battery from exposure to the sparks.**

Failure to follow these rules may damage electronic control modules resulting in unsafe operation of the vehicle or result in fire causing severe bodily injury and/or property damage.

REPLACEMENT PARTS

WARNING

To maintain peak performance, always use original Taylor-Dunn replacement parts intended for use on your vehicle. Taylor-Dunn components are designed and tested for use on specific Taylor-Dunn model vehicles. Only use the correct Taylor-Dunn replacement components for your Taylor-Dunn vehicle.

Do not modify your vehicle:

Modifications to this vehicle may have an undesirable affect on the operation of the vehicle, result in additional frame stress, or stress other components resulting in premature failure or an unsafe condition and may lead to an accident resulting in serious injury or death.

Using Non-Taylor-Dunn Replacement Components

To maintain peak performance, always use original Taylor-Dunn replacement parts intended for use on your vehicle.

Taylor-Dunn components are designed and tested for use on specific Taylor-Dunn model vehicles. Only use the correct Taylor-Dunn replacement components for your Taylor-Dunn vehicle.

Electrical Components

Electrical components not tested by Taylor-Dunn (or intended for use on other Taylor-Dunn vehicles) may have unanticipated interaction and/or interference with the vehicle control systems resulting in unsafe vehicle operation or damage to the electrical system.

Mechanical Components

Mechanical components not tested by Taylor-Dunn (or from other model Taylor-Dunn vehicles) may have an undesirable affect on the operation of the vehicle, result in additional frame stress, or stress other components resulting in premature failure or an unsafe condition.

Due to the unknown properties of non-Taylor-Dunn tested components or from components not originally equipped on the vehicle, we cannot approve their use in a Taylor-Dunn vehicle.



EMISSIONS WARRANTY

California Emission Control Warranty Statement Your Warranty Rights And Obligations

The California Air Resources Board and Taylor-Dunn Manufacturing Company are pleased to explain the evaporative emission control system (EECS) warranty on your 2018 model year gas powered burden carrier. In California, new gas powered burden carriers must be designed, built and equipped to meet the State's stringent anti-smog standards. Taylor-Dunn Manufacturing Company must warrant the EECS on your gas powered burden carrier for the period of time listed below provided there has been no abuse, neglect or improper maintenance of your gas powered burden carrier.

Your EECS may include parts such as the carburetor, fuel-injection system, the ignition system, catalytic converter, fuel tanks, fuel lines, fuel caps, valves, canisters, filters, vapor hoses, clamps, connectors, and other associated emission-related components.

Where a warrantable condition exists, Taylor-Dunn Manufacturing Company will repair your gas powered burden carrier at no cost to you including diagnosis, parts and labor.

Manufacturer's Warranty Coverage:

This evaporative emission control system is warranted for two years. If any evaporative emission-related part on your equipment is defective, the part will be repaired or replaced by Taylor-Dunn Manufacturing Company.

Owner's Warranty Responsibilities:

As the gas powered burden carrier owner, you are responsible for performance of the required maintenance listed in your owner's manual. Taylor-Dunn Manufacturing Company recommends that you retain all receipts covering maintenance on your gas powered burden carrier, but Taylor-Dunn Manufacturing Company cannot deny warranty solely for the lack of receipts.

As the gas powered burden carrier owner, you should however be aware that Taylor-Dunn Manufacturing Company may deny you warranty coverage if your gas powered burden carrier or a part has failed due to abuse, neglect, or improper maintenance or unapproved modifications.

You are responsible for presenting your gas powered burden carrier to Taylor-Dunn Manufacturing Company's distribution center or service center as soon as the problem exists. The warranty repairs should be completed in a reasonable amount of time, not to exceed 30 days. If you have a question regarding your warranty coverage, you should contact Taylor-Dunn's Customer Care Center at 1-714-956-4040.

General Emissions Warranty Coverage:

Taylor-Dunn Manufacturing Company warrants the EECS to the ultimate purchaser and each subsequent purchaser that the gas powered burden carrier is:

Designed, built and equipped so as to conform with all applicable regulations; and

Free from defects in materials and workmanship that cause the failure of a warranted part to be identical in all material respects to that part as described in Taylor-Dunn Manufacturing Company's application for certification.

The warranty period begins on the date the gas powered burden carrier is delivered to an ultimate purchaser or first placed into service. The EECS warranty period is two years.

Subject to certain conditions and exclusions as stated below, the warranty on emission-related parts is as follows:

1. Any warranted part that is not scheduled for replacement as required maintenance in the written instructions supplied, is warranted for the warranty period stated above. If the part fails during the period of warranty coverage, the part will be repaired or replaced by Taylor-Dunn Manufacturing Company according to subsection (4) below. Any such part repaired or replaced under warranty will be warranted for the remainder of the period.

2. Any warranted part that is scheduled only for regular inspection in the written instructions supplied is warranted for the warranty period stated above. Any such part repaired or replaced under warranty will be warranted for the remaining warranty period.
3. Any warranted part that is scheduled for replacement as required maintenance in the written instructions supplied is warranted for the period of time before the first scheduled replacement date for that part. If the part fails before the first scheduled replacement, the part will be repaired or replaced by Taylor-Dunn Manufacturing Company according to subsection (4) below. Any such part repaired or replaced under warranty will be warranted for the remainder of the period prior to the first scheduled replacement point for the part.
4. Repair or replacement of any warranted part under the warranty provisions herein must be performed at a warranty station at no charge to the owner.
5. Notwithstanding the provisions herein, warranty services or repairs will be provided at all of our distribution centers that are Taylor-Dunn Manufacturing Company dealers or engine manufacturing dealers authorized to service the subject engines or equipment.
6. The gas powered burden carrier owner will not be charged for diagnostic labor that is directly associated with diagnosis of a defective, emission-related warranted part, provided that such diagnostic work is performed at a warranty station.
7. Taylor-Dunn Manufacturing Company is liable for damages to other engine or equipment components proximately caused by a failure under warranty of any warranted part.
8. Throughout the gas powered burden carrier warranty period stated above, Taylor-Dunn Manufacturing Company will maintain a supply of warranted parts sufficient to meet the expected demand for such parts.
9. Any replacement part authorized by Taylor-Dunn Manufacturing Company may be used in the performance of any warranty maintenance or repairs and must be provided without charge to the owner. Such use will not reduce the warranty obligations of Taylor-Dunn Manufacturing Company.
10. Add-on or modified parts that are not exempted by the Air Resources Board may not be used. The use of any non-exempted add-on or modified parts by the ultimate purchaser will be grounds for disallowing a warranty claim. Taylor-Dunn Manufacturing Company will not be liable to warrant failures of warranted parts caused by the use of a non-exempted add-on or modified part.

Warranted Parts:

The repair or replacement of any warranted part otherwise eligible for warranty coverage may be excluded from such warranty coverage if Taylor-Dunn Manufacturing Company demonstrates that the gas powered burden carrier has been abused, neglected, or improperly maintained, and that such abuse, neglect, or improper maintenance was the direct cause of the need for repair or replacement of the part. That notwithstanding, any adjustment of a component that has a factory installed, and properly operating, adjustment limiting device is still eligible for warranty coverage. The following emission warranty parts listed are covered:

- | | |
|--------------------------------|--------------------------------------|
| (1) Fuel Tank | (11) Control Cables |
| (2) Fuel Cap | (12) Control Linkages |
| (3) Fuel Line | (13) Purge Valves |
| (4) Fuel Line Fittings | (14) Vapor Hoses |
| (5) Clamps | (15) Liquid/ Vapor Separator |
| (6) Pressure Relief Valves | (16) Carbon Canister |
| (7) Control Valves | (17) Canister Mounting Brackets |
| (8) Control Solenoids | (18) Carburetor Purge Port Connector |
| (9) Electronic Controls | |
| (10) Vacuum Control Diaphragms | |

About Your Vehicle

The purchase of your Taylor-Dunn vehicle shows a belief in high quality products manufactured in the USA.

Taylor-Dunn, a leading manufacturer of electric burden and personnel carriers since 1949, wants to be sure this vehicle provides years of reliable service. Please continue to read this manual and enjoy this high quality Taylor-Dunn vehicle.

Each base model is available in numerous configurations depending on what options were requested when the vehicle was ordered.

Licensing Requirements

This vehicle **IS NOT** approved for licensed operation on public roads and highways in the United States. Refer to local regulations if operated in other countries.

This model conforms to one or more of the following:

- American National Standards Institute Controlled Personnel and Burden Carriers ANSI B56.8.
- American National Standards Institute Controlled Industrial Tow Tractors ANSI B56.9.
- O.S.H.A. Standard Section 1910.178, Powered Industrial Trucks Type G
- O.S.H.A. Standard Section 1910.178, Powered Industrial Trucks Type D
- O.S.H.A. Standard Section 1910.178, Powered Industrial Trucks Type LP

This vehicle is designed for driving on smooth road surfaces in and around facilities such as industrial plants, nurseries, institutions, motels, mobile home parks, airports, and resorts.

Burden carriers:

This vehicle is designed for operation in various applications including both indoor¹ and outdoor operation. This vehicle should not be operated on unimproved roads such as a rocky environment, soft sand, or dirt roads with ruts or uneven road surfaces exceeding 4 inches.

All Vehicles:


This vehicle complies with one of the following designations: E, G, LP, or D. The vehicle identification tag lists the specific compliance designation. Operate this vehicle only in environments consistent with the compliance designation. Operation in other more hazardous environments can cause injury or death. Vehicles complying with more stringent designations are labeled as to the designation.

¹ Vehicles with internal combustion engines give off various fumes, gases, and soot while running, including carbon monoxide. Do not start or run the engine in a closed or poorly ventilated building where the exhaust gases can accumulate. Breathing these gases may result severe bodily injury or death. LP fuel is recommended when operating indoors but does not negate the hazards listed above.

HOW TO IDENTIFY YOUR VEHICLE

Data Plate

To identify the model series of your vehicle, refer to the vehicle data plate.

		TAYLOR-DUNN		2314 West Ball Road Anaheim, CA 92804-5417 USA • (714) 855-4050 www.taylor-dunn.com	
MODEL NUMBER: _____		SERIAL NUMBER: _____			
MFG DATE: _____					
APPROX. WEIGHT _____ lb		_____ kg			
DRAW BAR PULL _____					
NORMAL: _____ lb		_____ N			
ULTIMATE: _____ lb		_____ N			
LOAD CAPACITY: _____ lb		_____ kg			
FUEL TYPE: _____					
BATTERY (FUEL TYPE E ONLY): _____		VOLTS: _____			
WEIGHT MAXIMUM: _____ lb		_____ kg			
MINIMUM: _____ lb		_____ kg			
CONFORMS TO TYPE _____ VEHICLE PER OSHA STANDARD 1910.178 (POWERED INDUSTRIAL TRUCKS) AND ANSI B56 _____ AT THE DATE OF MANUFACTURE					
94-373-70					

Where to Find Data Plate and Serial Number



Data plate



Serial number tag on the main frame

Taking Delivery

Inspect the vehicle immediately after delivery. Use the following guidelines to help identify any obvious problems:

- Examine the contents of all packages and accessories that may have come in separate packages along with the vehicle.
- Make sure everything listed on the packing slip is there.
- Check that all wire connections, battery cables, and other electrical connections are secure.
- Check battery cells to be sure they are filled.
- Check the tire pressure and tightness of the lug nuts
- Check for any signs of damage.

NOTICE

New front wheel bearing adjustment must be inspected after the first 24 hours of operation. This includes new vehicle installations. Failure to inspect the bearings after the break in period may result in premature failure of the bearings.

Check the operation of each of the following controls:

- Throttle Pedal
- Brake Pedal
- Parking Brake
- Ignition Switch
- Transmission Shift Lever
- Reverse Warning Alarm (if equipped)
- All lights
- Steering Wheel
- Horn

IF A PROBLEM IS FOUND

If there is a problem or damage as a result of shipping, note the damage or problem on the bill of lading and file a claim with the freight carrier. The claim must be filed within 48 hours of receiving the vehicle and its accessories. Also, notify your dealer of the claim.

If there is any problem with the operation of the vehicle, **DO NOT OPERATE THE VEHICLE**. Immediately contact your dealer and report the problem. The report must be made within 24 hours of receiving the vehicle and its accessories.

The only personnel authorized to repair, modify, or adjust any part of this or any Taylor-Dunn vehicle is a factory authorized service technician.

WARNING

The only personnel authorized to repair, modify, or adjust any part of this or any Taylor-Dunn vehicle is a factory authorized service technician. Repairs made by unauthorized personnel may result in damage to the vehicles systems which could lead to an unsafe condition resulting in severe bodily injury and/or property damage. Unauthorized repairs may also void the vehicles warranty.

Operator Training

Per the following regulations, the owner of this vehicle shall conduct an Operator Training program for all those who will be operating this vehicle:

- ANSI/ITSDF 56.8-2006 Personnel and Burden Carriers: Part II, Paragraph 6.2a.
- Code of Federal Regulations (CFR) Title 29, Subtitle B, Chapter Xvii OSHA, Part 1910.178 Powered Industrial Trucks (2011): 1910.178, Section (I).
- Per OSHA Regulation, 29 CFR 1910.178 Powered Industrial Truck Operator Training, the owner must keep a record of conducted training and maintenance performed on the vehicle.

The training program shall not be condensed for those claiming to have previous vehicle operation experience. Successful completion of the Operator Training program shall be required for all personnel who operate this vehicle.

The Operator Training program shall include the following:

- Operation of this vehicle under circumstances normally associated with your particular environment.
- Emphasis on the safety of cargo and personnel.
- All safety rules contained within this manual.
- Proper operation of all vehicle controls.
- A vehicle operation and driving test.

Driver Qualifications

Only those who have successfully completed the Operator Training program are authorized to drive this vehicle. Operators must possess the visual, auditory, physical, and mental ability to safely operate this vehicle as specified in the American National Standards Institute Controlled Personnel and Burden Carriers ANSI B56.8 and/or American National Standards Institute Controlled Industrial Tow Tractors B56.9.

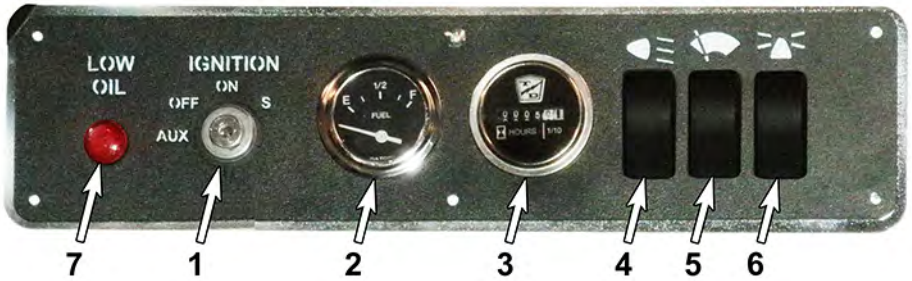
The following are minimum requirements necessary to qualify as an operator of this vehicle:

- Demonstrate a working knowledge of each control.
- Understand all safety rules and guidelines as presented in this manual.
- Know how to properly load and unload cargo.
- Know how to properly park this vehicle.
- Recognize an improperly maintained vehicle.
- Demonstrate the ability to handle this vehicle in all conditions.

www.taylor-dunn.com



Vehicle Controls



1: Ignition Switch

The ignition switch has 4-positions: AUX, OFF, ON, START.

Rotating the switch clockwise to the first position turns the ignition system ON.

Continue rotating the switch to the START position (S) to engage the engine starter motor. This is a momentary position and the switch will return the ON position when it is released.

From the OFF position, rotate the switch counterclockwise for the auxiliary position (AUX).

2: Fuel Gauge

The fuel gauge displays approximately how much fuel is in the fuel tank only when the ignition switch is ON. Do not refuel any vehicle while the engine is running.

The fuel gauge indicator may vary slightly when the vehicle is in motion. The most accurate reading is obtained with the vehicle on level ground.

With ignition switch OFF, the fuel gauge indicator may drift from when the ignition switch is in the ON position.

3: Engine Hour Meter

Displays total hours of engine operation.

4: Headlight Switch

Push the top of the switch to turn the lights ON; push the bottom to turn OFF.

5: Wiper Switch

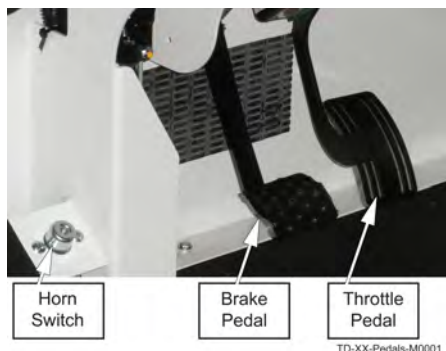
(optional) Push the top of the switch to turn the windshield wiper ON ; push the bottom to turn OFF.

6: Beacon or Strobe Switch

(optional) Push the top of the switch to turn the beacon ON; push the bottom to turn OFF.

7: Low Oil Light

The engine monitors oil pressure. This light will be illuminated if the oil pressure drops too low and the engine will not run.



Throttle Pedal

The throttle pedal is located on the floorboard and is intended to be operated by the drivers right foot. It controls the speed of the vehicle and operates similar to the throttle pedal in an automobile. Press the pedal to increase speed and release the pedal to decrease speed.

Foot Brake Pedal

The foot brake pedal is located to the left of the throttle pedal. This pedal is designed for operation with the drivers right foot. It works similar to the brake in an automobile. Applying pressure to the brake pedal slows the vehicle according to the amount of pressure applied. Relieving pressure from the pedal releases the braking action.

Parking Brake

The parking brake is actuated with a hand lever, located to the right of the driver on the kick panel.

To set the parking brake: Press the brake pedal and push the lever forward and down until it locks.

To release the park brake: Pull the lever up and all the way back to the kick panel.

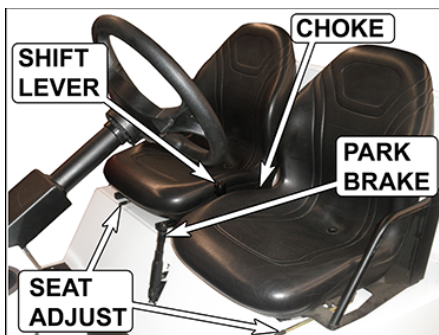
Note: The parking brake can be adjusted by rotating the knob on the end of the handle.

Horn Switch

The horn switch is designed to be operated with the drivers left foot. The switch is located to the left of the steering column. To activate the vehicle horn, press the switch with your left foot.

Shift Lever

The shift lever is located to the right of the driver between the seats. Details regarding the shift lever can be found on the following pages.



Choke

The choke increases the amount of fuel in the mixture and only needs to be used when starting a cold engine. Refer to starting the engine for details.

Seat Adjust

⚠ WARNING

DO NOT attempt to adjust the driver or passenger seats while the vehicle is in motion. Adjusting the seat while in motion could result in sudden and violent uncontrolled movement of the seat. The sudden movement of the seat could cause the driver to lose control of the vehicle or eject the occupant from the vehicle resulting in severe personal injury and/or property damage.

The position of the driver and passenger seats can be adjusted. The adjustment levers are located under the seats.

To move the seat forward or backward:

1. Stop the vehicle.
2. Push the lever under the seat to unlatch the seat.
3. Move the seat to the desired position (forward/back).
4. Release the lever once you have reached the desired position.
5. Make sure the seat has locked securely before driving the vehicle.

Directional Signals

Directional signals are optional and may not be installed on your vehicle.

The turn signal lever is located on the left side of the steering column. Push the lever forward to activate the right turn signal and pull the lever back to activate the left turn signal.

Note: The switch is not self canceling and must be manual turned off.

Hazard Light Switch

Hazard lights are optional and may not be installed on your vehicle.

The hazard light switch is located on the left side of the steering column. The switch is a small tab. To activate the hazard lights, pull the tab out. To turn the hazard lights off, push forward or pull back the directional signal lever.

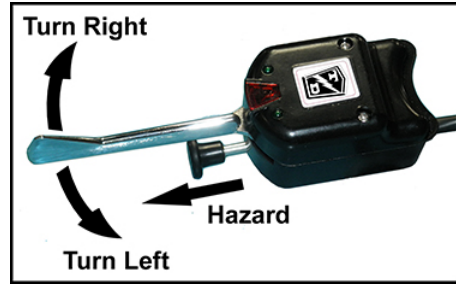
Steering

The steering wheel and steering system are similar to an automobile. To turn right, turn the steering wheel clockwise. To turn left, turn the steering wheel counter-clockwise.

Operator Presence Switch

A switch located under the driver's seat kills the engine when the driver leaves the seat. The driver must be seated for the engine to operate.

Whenever the driver leaves the vehicle, the driver should turn the ignition switch off, place the shift lever in the neutral position, and set the park brake.



Vehicle Operation

General Safety Guidelines

WARNING

Your ability to operate a motor vehicle can be seriously impaired with blood alcohol levels far below the legal minimum.

If you have been drinking alcohol, don't drive. Ride with a designated non-drinking driver, call a cab, or use public transportation.



WARNING

When leaving the approved operating position ALWAYS:

- 1) Firmly set the park brake.**
- 2) Place the shift level in the Neutral position.**
- 3) Turn the ignition switch OFF and remove the key.**

Failure to perform these operations may result in unexpected vehicle movement causing severe bodily injury and/or property damage.

- Only qualified and trained operators with no physical, mental, or sensory disabilities shall operate this vehicle or any of its components.
- Before operating this vehicle, perform all Daily and Pre-operation checks as defined in the Vehicle Maintenance section.
- Confirm proper operation of all vehicle controls before operating the vehicle.
- Wear closed toe low heel shoes when operating the vehicle.
- No reckless driving.
- Do not operate a motor vehicle while under the influence of alcohol or any drug that may impair your ability to drive.
- Keep all body parts (head, arms, legs) inside this vehicle while it is moving.
- All occupants shall remain seated while the vehicle is in motion, one passenger per seating position. No passengers are allowed to be transported in the cargo area of the vehicle.
- The operator shall confirm that all passengers are physically able to secure themselves while being transported in this vehicle.
- Occupants shall not exit the vehicle until the vehicle has come to a complete stop.
- Do not transport small children. This vehicle is not designed to accommodate child seats.
- Do not leave children unattended in the vehicle.
- Keep a clear view ahead at all times.
- Keep the vehicle under control at all times.
- Observe all traffic regulations and speed limits.
- The vehicle shall be equipped with head and tail lights if operated at night.
- This vehicle may overturn if turned sharply when driven at high speeds.
- Drive slowly when making a turn, especially if the ground is wet or when driving on an incline.
- Yield right of way to pedestrians, ambulances, fire trucks, or other emergency vehicles.
- Sound your horn when approaching pedestrians. DO NOT assume the pedestrian is aware of your presence; before passing, slow down and allow sufficient clearance between the vehicle and pedestrian.

- Do not overtake another vehicle at intersections, blind spots, narrow isles, or other dangerous locations.
- Stop and sound horn at all intersections regardless if it is posted with a stop sign.
- Do not operate this vehicle in areas at risk to falling objects.
- Do not drive over loose objects, holes, or bumps.
- Do not drive under any object that is less than 80 inches (203 cm) from the ground.
- Do not drive off of curbs or other steep drop-offs more than 2 inches high.
- Stay in your driving lane under normal conditions, maintaining a safe following distance from other vehicles.
- If equipped with doors, the doors must remain closed and latched while vehicle is in motion.
- Driving through water or mud may affect brake performance. ALWAYS test brakes by pressing the brake pedal after driving through water or mud.



Seat Belts (optional)

Your vehicle may be equipped with safety seat belts. The requirement for the use of safety seat belts is to be determined by the application where the vehicle is operated.

Safety seat belts shall only be installed on vehicles equipped with factory approved Roll Over Protection (ROP) such as a steel cab or cage. Fiberglass cabs or sun tops do not qualify as ROP.

The use of safety seat belts helps to restrain you and your passengers in case of a collision.

Safety belts provide the best restraint when:

- The occupant is sitting upright (not slouched)
- The lap belt is snug and low on the hips
- The shoulder belt is snug against the chest
- The knees are straight forward

Refer to the following pages for directions on how to properly use safety belts.

WARNING

In the event of a vehicle tip over, studies have indicated that it is safer to be able to move away from a tipping vehicle unless the vehicle is equipped with an Operator Protective Structure (OPS).

Do not use seat belts unless the vehicle is equipped with OPS. Using seat belts in a vehicle without OPS may result in occupants being crushed while restrained in the vehicle.

WARNING

- **DO NOT** use seat belts in a vehicle that is not equipped with OPS.
- **Make sure you (the driver) and all passengers are properly seated in approved seating positions and wearing seat belts. Improper sitting and/or failure to wear seat belts may result in severe bodily injury in a collision or other vehicle accident.**
- **If equipped with a shoulder belt, do not wear the shoulder belt under the arm. Never swing it around the neck over the inside shoulder.**
- **Never use a single belt for more than one person or across more than one seating position.**
- **DO NOT** allow a passenger to hold a child while the vehicle is moving. The passenger cannot protect a child in a collision and the child may be severely injured.
- **Failure to follow these rules will increase the risk of injury in a collision or other vehicle accident.**
- **All seat belts and seat belt hardware shall be inspected by a qualified technician after any collision. Failure to confirm proper operation of seat belt assemblies may result in failure of the seat belt in another collision leading to severe bodily injury.**

WARNING

Doors (optional) on this vehicle are designed for protection against the weather. Do not rely on the doors to keep the occupants contained within the vehicle or to protect against injury in an accident.

All Seat Belt Types

Refer to additional details below for details applying to different types of seat belts.

Before fastening the seat belt:

- If equipped with adjustable seats, adjust the seat to the position that suits you best.
- Make sure the shoulder and/or lap belt is not twisted and freely passes through any guides.

To unfasten the belt, Push the release button on in the buckle.

Combination Lap and Shoulder Belts

While your vehicle is in motion, the combination lap and shoulder belt adjusts to your movement. However, if you brake hard, corner hard or if your vehicle receives an impact of 5 mph (8 kph) or more, the lap and shoulder belt locks and helps reduce your forward movement. The retractor can also be made to lock by rapidly pulling on the belt.

To fasten the belt, pull the lap/shoulder belt from the retractor so that the shoulder portion of the belt crosses your shoulder and chest. Insert the belt tongue into the proper buckle until you hear a snap and feel it latch.

To unfasten the belt, Push the release button on in the buckle. This allows the tongue to unlatch from the buckle. Guide the tongue to its stowed position while the belt retracts. If you do not guide the tongue, it may strike you or part of the vehicle.

Lap Belts Only

With Auto Retractor: To fasten the belt, pull the belt from the retractor and insert the belt tongue into the proper buckle until you hear a snap and feel it latch. Make sure the tongue is securely fastened in the buckle.

When unfastening the belt, guide the belt tongue to its stowed position. If you do not guide the tongue, it may strike you or part of the vehicle.

Without Auto Retractor: To fasten the belt, insert the belt tongue into the proper buckle until you hear a snap and feel it latch. Pull the belt adjustor strap until the belt is snug against your lap.

After unfastening the belt, stow the belt in a position so that it cannot fall out of the vehicle while the vehicle is in motion and the belt is not in use.

Seat Belts While Pregnant

If equipped with seat belts, always wear a seat belt. Wearing your seat belt protects you and your baby from injury or death in the event of a collision.

Be sure to wear your seat belt correctly. The lap strap shall go under your belly, across your hips and as high as possible on your thighs. The shoulder strap shall go between your breasts and off to the side of your belly. Seat belt straps shall never go directly across your stomach. The seat belt should fit snugly.

Seat Belt Maintenance

Check the safety seat belt systems periodically to make sure that they work properly and are not damaged.

All safety seat belt assemblies, including retractors, buckles, front seat belt buckle support assemblies and attaching hardware, shall be inspected by a qualified technician after any collision.

Taylor-Dunn recommends that all safety seat belt assemblies used in vehicles involved in a collision be replaced. However, if the collision was minor and a qualified technician finds that the belts do not show damage and continue to operate properly, they do not need to be replaced. Safety belt assemblies not in use during a collision shall also be inspected and replaced if either damage or improper operation is noted.

Starting the Engine

DANGER

Internal combustion engines give off various fumes, gases, and soot while running, including carbon monoxide. Do not start or run the engine in a closed or poorly ventilated building where the exhaust gases can accumulate. Breathing these gases may result severe bodily injury or death.

WARNING

DO NOT OPERATE VEHICLE in an area that may be contaminated with combustible vapors. The vapors can be ingested into the engine intake causing uncontrolled acceleration, excessive engine speed, fire, explosion, property damage and/or severe bodily injury.

WARNING

Taylor-Dunn **DOES NOT** recommend the use of starting fluids on any engine. Starting fluids are highly flammable and could cause fire or explosion resulting in severe bodily injury. The use of starting fluids may also damage the engine.

NOTICE

- Do not let the engine idle for long periods while cold. This can result in contaminated engine oil, carbon build up in cylinders, or valve sticking.
- Operate the engine at idle or low loads until it has reached normal operating temperature range.

NOTICE

- Do not press the throttle pedal while starting the engine. Pressing the pedal while starting the engine could result in excessive engine RPM and damage to the engine.
- If the engine does not start within 30 seconds, release the ignition switch and wait a minimum of 2 minutes before attempting to start the engine again. Engaging the starter motor for too long of a time period may overheat and damage the starter motor.
- If the engine does not start or stalls while starting, wait 3 to 4 seconds before attempting again. This will protect the starter from damage due to built up cylinder pressure.

Before operating this vehicle: Refer to General Safety Guidelines at the beginning of this chapter. Perform all necessary vehicle preparation steps, inspections, or maintenance before operating this vehicle.

Note: The vehicle is equipped with a various starter interlock switches. All interlock switches must be closed to start the engine.

1. Place the transmission shift lever in Neutral.
2. Set the parking brake.
3. Press the foot brake pedal.
4. Rotate the ignition switch to the START position and hold (see Cautions above) until the engine starts and then release the switch.
Pull up on the choke knob if the engine does not start after a few cranks, When the engine starts, allow it to idle for a short time and then slowly push the knob back down. If the engine starts to die, pull the knob back out until the engine is warm enough to run without the choke.

Note: If the engine requires the choke all the time then you should have the engine serviced.

Stopping the Engine

Note: Follow instructions for parking the vehicle before turning the engine OFF.

Allow the engine to slow to idle then turn the ignition switch OFF.

Jump Starting

WARNING

- Read the battery warning in the Battery maintenance section of this manual before attempting to jump start a vehicle.
- Confirm that the jump start vehicle has the same voltage ground type electrical system as the dead vehicle. Incompatible systems will result in damage to one or both vehicle electrical systems.
- Incorrect connection of jumper cables will result in damage to one or both vehicle electrical systems.
- Make sure that the jumper cable clamps are securely connected. Loose connections may result in electrical arcing, damage to the battery and/or severe bodily injury.
- The engine on the vehicle being used to jump start shall be **OFF** while connecting cables.

CAUTION

- **DO NOT** allow the two unconnected cable clamps to touch each other. This will cause a short circuit and may damage the vehicle electrical system and/or result in bodily injury.
- **DO NOT** allow the two vehicles to touch each other. This may cause a short circuit and may damage the vehicle electrical system and/or result in bodily injury.
- Make sure that the cables are routed away from any moving components such as fans and drive belts.
- Make sure that the cables are secured in place and cannot move into any moving components such as fans and drive belts.

1. Park the jump start vehicle close to the dead vehicle and turn the engine OFF.
2. Connect the red (+) cable clamp to the battery positive terminal on the dead vehicle. Make sure the black cable clamp is insulated from the vehicle.
3. Connect the other end of the red (+) cable clamp to the battery positive terminal on the vehicle that is used to jump start.
4. Connect the black (-) cable clamp to the battery negative terminal on the vehicle that is used to jump start.
5. **BEFORE NEXT STEP, CONFIRM CABLES ARE FIRMLY CONNECTED TO THE CORRECT BATTERY TERMINALS.**
6. Connect the black (-) cable to the engine block on the dead vehicle.
7. Start the engine of the jump start vehicle and bring to high idle RPM.
8. Attempt to start the dead vehicle following normal starting procedures.
9. After completing the jump start, disconnect the cables from the vehicles in this order:
 - Engine block, jumped vehicle.
 - Battery negative, other vehicle.
 - Battery positive, jumped vehicle.
 - Battery positive, other vehicle.
10. Do not turn the engine off until the battery has had time to charge.

NOTICE

Frequently required jump starts is an indication of a faulty battery or charging system. Refer diagnosis to a qualified technician.

Driving

Before operating this vehicle:

- Perform all daily and pre-operation checks as defined in the Vehicle Maintenance section.
- Refer to General Safety Guidelines at the beginning of this section.

WARNING

- Always apply the parking brake when leaving the approved operator position. Selecting Neutral DOES NOT apply the vehicle brakes or any locking device to prevent vehicle movement. An unoccupied vehicle without the park brake applied may move unexpectedly resulting in property damage and/or severe bodily injury.
- DO NOT rely on the parking brake to prevent vehicle movement while the engine is running. Turn the engine OFF or block the wheels AND set the parking brake if you must leave the approved operator position with the engine running. Failure to follow these instructions may result in unexpected vehicle movement resulting in property damage and/or severe bodily injury.

WARNING

Confirm engine is at low idle before selecting or changing direction. If the engine is not at low idle then the vehicle may lurch forward or back resulting in loss of control of the vehicle, severe bodily injury, property damage and/or damage to the transmission.

WARNING

DO NOT exceed the maximum rated speed for your vehicle, locally imposed speed limits, or the safe operating speed for conditions. Exceeding any of these speed limits will increase the likelihood of an accident causing bodily injury. In addition, exceeding the maximum rated speed for your vehicle may result in damage to the vehicle drive train.

WARNING

Do not coast with the shift lever in the Neutral position. Engine braking is disabled in the Neutral position and could cause loss of control of the vehicle resulting in property damage and/or severe bodily injury.

WARNING

Firmly apply the foot brake before moving the shift lever into or out of the Neutral position. Moving the shift lever without the brake applied may cause unexpected vehicle movement resulting in property damage and/or severe bodily injury.

WARNING

DO NOT “ride the brakes” or drive with your left foot resting on the brake pedal. Riding the brakes will cause excessive heat build up and rapid wear in the brake system and could result in brake failure causing a collision or accident with severe injury.

WARNING

DO NOT transport or load cargo in the front passenger area or leave loose items on the front floorboard. Cargo placed in the front passenger area may interfere with the driver causing loss of control of the vehicle and result in a collision or accident with severe injury.

CAUTION

Shifting at engine RPM's higher than idle may result in an unexpected jump causing severe personal injury.

NOTICE

Do not idle with any gear selected for more than 1 minute. Idling with a gear selected will cause excessive wear and premature failure of the drive belt and/or primary sheave.

1. Press the foot brake pedal.
2. Release the parking brake.
3. Start the engine. Refer to Starting the Engine for details regarding starting the engine.
4. Move the transmission shift lever into the desired direction (see below).
5. Slowly press the throttle pedal to increase speed.

Selecting a Gear

Selecting or changing gears should only be done while the engine is running at idle.

To select a gear: Push down on the shift lever knob and then push it to the front for forward or pull it to the rear for reverse.

Reversing Direction

Always come to a complete stop and allow the engine to idle before moving the shift lever to Neutral or other direction.

Stopping

Release the throttle pedal and use your right foot to press the brake pedal. The amount of force required to stop will vary depending on the environment and load on the vehicle.

Parking

1. Bring the vehicle to a stop at an authorized parking space.
2. Firmly set the parking brake.
3. Place the shift lever in Neutral.
4. Turn the ignition switch OFF.

Note: If parking this vehicle on an incline, turn the wheels to the curb, or block the wheels.

NOTICE

Attempting to select a gear with the engine off may cause damage to the shift linkages.

Shifting at engine RPM's higher than idle may damage the transmission.

Collisions or Accidents

A collision or accident may damage the electrical circuits or battery resulting in a fire hazard or chemical spill. In the event of a collision or accident, immediately turn the ignition switch OFF, set the park brake, then exit the vehicle.

Call emergency personnel if there is any indication of smoke, burning smell, electrical arcing, or leaking fluid.

Tip Over

In the event of a tip over AND the vehicle is equipped with an Operator Protective Structure (OPS), stay inside the confines of the vehicle. Exit the vehicle after the vehicle has come to a complete stop.

In the event of a tip over and the vehicle IS NOT equipped with OPS. Quickly exit the vehicle and quickly move out of its path.

Transporting Pets

Pets should only be transported in a pet carrier that is securely tied down on the rear cargo deck.

Vehicle Load Capacity, Definition

The rated maximum load capacity of a vehicle is the load carrying capacity of the **standard** model. The maximum load is on the vehicle's data plate.

Occupants and optional equipment added to the vehicle at time of manufacture or installed after delivery by the dealer or user reduces the capacity.

Example: Standard Load Capacity = 3,000 pounds:

3,000 - Driver (200) - Steel Cab/Doors Option (300) - Cargo Box (400) = 2,100 pounds maximum load on deck. Add a passenger and the maximum load is reduced to 1,900 pounds.

The definition of maximum load is the maximum weight than can be carried on a vehicle under ideal conditions. There are many conditions that will reduce the maximum safe load a vehicle can carry.

Some of these conditions are, but not limited to:

- Uneven road surface.
- Tall loads.
- Wide loads.
- Long loads.
- Liquid loads (sloshing).
- Traveling up or down grades.
- Traveling across grades.

The rated capacity assumes the load has a low center of gravity and is centered on the deck. As example: A 20 foot tall, 3,000 pound statue on the deck of a 3,000 pound capacity vehicle is not approved.

Liquid loads sloshing around in a tank will shift the center of gravity and may result in stability and braking issues. Liquid loads must be secured and have fluid baffles in the tank to help reduce shifting load weight due to sloshing.



Loading Cargo

- Before loading or unloading cargo:
 1. Place the transmission shift lever in neutral.
 2. Turn the engine OFF
 3. Set the park brake.
- Do not transport cargo that is wider than the vehicle.
- Do not load cargo in the passenger compartments.
- Use only Taylor-Dunn approved cargo accessories.
- Do not exceed the load capacity of the vehicle.
- The standard designated cargo area is the rear deck. Only load cargo on the deck unless the vehicle has been equipped with Taylor-Dunn approved alternative cargo storage areas.
- Cargo shall only be transported in the designated cargo area of the vehicle and evenly distributed with the center of gravity close to the center of the designated cargo area.
- All cargo shall be secured to prevent falling from the vehicle, falling into a operator or passenger compartment, or shifting position while the vehicle is in motion.
- Our deck enclosures and covers such as cabs, fiberglass tops, surrey tops, cargo boxes, and similar structures are not designed to carry cargo or accessories unless equipped from the factory. Mounting additional weight on these structures may result in sudden failure of the cover and/or cover supports causing severe personal injury.
- Cargo consisting of fluid in tanks shall have fluid baffles in the tank to help reduce sloshing and shifting load weight.

WARNING

DO NOT transport or load cargo in the front passenger area or leave loose items on the front floorboard. Cargo placed in the front passenger area may interfere with the driver causing loss of control of the vehicle and result in a collision or accident with severe injury.

WARNING

DO NOT transport passengers in the cargo area. All passengers must be seated in the available seats, one passenger per seating position.

WARNING

DO NOT place any cargo on the driver or passenger seats. Any object placed on the driver seat may activate the operator presence switch; Any object placed on the passenger seat may fall onto the driver seat and activate the switch resulting in unexpected movement of the vehicle causing severe bodily injury and/or property damage.

Transporting Pets

Pets should only be transported in a pet carrier that is securely tied down on the rear cargo deck.

TOWING

WARNING

Use caution when towing trailers wider than the tow tractor allowing for additional isle clearance and corner cutting of the trailers.

Not allowing for additional clearance may result in collision with severe bodily injury and/or property damage.

Towing a Trailer

Note: Towing up or down grades will significantly reduce the capacity of the vehicle.

When towing trailers:

- Do not exceed the DBP towing capacity of the vehicle. See Specifications and DBP definition.
- Only use Taylor-Dunn approved trailer hitches.
- Do not exceed the capacity of the trailer hitch installed on the vehicle.
- Do not exceed the load capacity of the trailer. Refer to documentation supplied with your trailer for information regarding load capacity of the trailer.
- Make sure all loads are securely tied down. Refer to documentation supplied with your trailer for information regarding attaching loads to the trailer.
- Cargo consisting of fluid in tanks shall have fluid baffles in the tank to help reduce shifting load weight.
- Do not back up when towing more than one trailer.
- Drive slowly when towing loads with a high center of gravity.
- When turning, be sure to allow for "corner cutting" of the trailer.
- Allow for longer stopping distances when towing heavy loads.
- Allow for longer stopping distances when driving down a grade.
- Block the trailer wheels before disconnecting from the vehicle.
- Do not disconnect a trailer while parked on a grade.

Draw Bar Pull (DBP), Definition

DBP is a measure of pulling force required to move a load. The load may be a trailing load or a pushed load. It is normally expressed in pounds or Newtons.

The DBP of a tow tractor is the horizontal force exerted on a load at its coupler while towing or pushing a load. To measure the DBP, a scale would be connected in line with the tractor coupler and the load. The scale will directly read the DBP as the tractor tows the load.

Tow tractor DBP specifications, definition:

- Normal DBP: Highest DBP that can be sustained for a given duty cycle.
- Ultimate DBP: Also referred to a Maximum DBP. Highest DBP achieved while traveling at a minimum speed of approximately 0.5 mph (0.8 kph) for a minimum of 30 seconds. This specification is used in calculations for getting a load moving.

Notes:

Tow tractor DBP specifications are based on:

- Road surface consisting of level dry clean asphalt, brushed concrete or equivalent.
- Maximum battery weight installed per tow tractor battery specification.

Towing a load up any grade will significantly increase the DBP required.

Most paved roads and parking lots have a drainage grade to allow water to run off. When operating a tow tractor at or near its maximum capacity, this drainage grade will significantly affect DBP required to pull the load and may result in exceeding the tractor specifications.

The load capacity and towing capacity of a burden carrier cannot be combined. The towing capacity is reduced as weight is added to the burden carrier. This weight includes the passengers and optional equipment as well as the load on the deck.

The formula for calculating reduced towing capacity DBP is:

Reduced DBP = DBP - VI * (DBP/Vc) where:

- Vc = Vehicle Rated Capacity
- DBP = Normal Draw Bar Pull specification
- VI = Vehicle Load (includes passengers and options)

The weight that the vehicle can pull can be calculated based on the DBP. This capacity would be for a single standard 4-wheel trailer with a front steer axle and includes the weight of the trailer.

- Level Surface: Towed Weight = DBP * 50
- Up a grade: Towed Weight = DBP / (2 + %g) * 100 where %g = the percent of grade

Towing the Vehicle

Note: If at all possible, this vehicle should be placed on a carrier, rather than towing.

WARNING

DO NOT tow a vehicle with a tow strap if the vehicle brakes are not working properly. Using a strap to tow a vehicle with no brakes may result in loss of control of both vehicles causing severe bodily injury and/or property damage.

WARNING

DO NOT tow the vehicle faster than 5 mph (8 kph) or its maximum designed speed, whichever is lower.

Towing the vehicle faster than 5 mph may result in one or more of the following:

- Loss of control of both vehicles causing severe bodily injury and/or property damage.
- Damage to the towed vehicle drive train components and/or motor.

WARNING

Use extreme caution if towing a vehicle backwards and it is recommended ONLY to tow a short distance until able to connect to the front tow bar and tow forwards.

If towed backwards, the towed vehicle may swing wide turning turns resulting in loss of control of both vehicles causing severe bodily injury and/or property damage

1. Attach a tow strap to the front bumper tow-bar.
2. Turn the engine off and place the transmission in neutral.
3. Use another driver to steer this vehicle while it is being towed. Be sure the driver uses the brakes when the towing vehicle slows or stops.
 - Do not tow the vehicle faster than 5 m.p.h. or its maximum designed speed, whichever is lower.

Engine Fuel

WARNING



Fuel is highly flammable. Use extreme care whenever refuelling your vehicle.

- Turn the engine off. **DO NOT** refuel with the engine running.
- **DO NOT** remove the fuel cap while the engine is running.
- Always refuel outdoors or in a well ventilated area.
- **DO NOT** overfill the fuel tank. Do not fill the tank neck.
- Fill the fuel tank with proper fuel for your engine. Filling the fuel tank with improper fuel may result in a fire and will damage the engine.
- Do not smoke or allow open flames or sparks in or near the area where refueling is performed or where fuel is stored.
- Wipe up all spills immediately.
- If fuel spills on your skin or clothing, immediately wash it off with soap and water and change clothing.
- **DO NOT** mix gasoline, alcohol, or gasohol with diesel fuel. Mixing fuels may result in explosion causing severe bodily injury and/or property damage.
- **DO NOT** fill portable fuel containers on the vehicle. Remove the container an place on the ground to refuel.

WARNING



USE THE CORRECT FUEL.

The type fuel for your vehicle will vary depending on how the vehicle was ordered. Make sure that you are using the correct fuel for your engine. Use of the incorrect fuel may result in fire or explosion causing severe bodily injury and/or property damage.

WARNING

The fuel system may be under pressure. If the fuel cap is venting vapor or if you hear a hissing sound while removing the fuel cap, wait until the hissing stops before completely removing the cap or line.

Failure to follow this procedure may result in fuel spraying out of the system and causing personal injury.

APPROVED FUELS

WARNING



USE THE CORRECT FUEL.

The type fuel for your vehicle will vary depending on how the vehicle was ordered. Make sure that you are using the correct fuel for your engine. Use of the incorrect fuel may result in fire or explosion causing severe bodily injury and/or property damage.

NOTICE

Improperly formulated gasohol blends may cause performance problems and/or damage to the engine or fuel system. May also void the engine warranty.

- The use of fuels that do not meet the following specifications may lead to engine damage and void the engine warranty.
- If your gasoline or LPG engine knocks heavily then it may be due to inferior fuel. Contact a qualified technician to inspect the fuel and engine operation.

- Gasoline: Unleaded 87 or 89 Octane.
- Gasohol: This is a blend of gasoline and alcohol. Unleaded gasoline with up to 10% ethanol by volume.
- MTBE: Methyl Tertiary Butyl Ether (MTBE) and unleaded gasoline blend (max 15% MTBE by volume)



REFUELING

WARNING

DO NOT operate the vehicle if the fuel cap is missing or damaged.

DO NOT substitute ANY other device or material to replace a missing fuel cap. Only use the factory approved fuel cap for your vehicle.

A missing or damaged fuel cap could result in one or more of the following:

- Fire or explosion resulting in severe injury and property damage.
- Fuel spill.
- Uncontrolled emission of fuel vapors. Fuel vapors are toxic and could result in severe injury or death if in an enclosed area.

WARNING

The fuel system may be under pressure. If the fuel cap is venting vapor or if you hear a hissing sound while removing the fuel cap, wait until the hissing stops before completely removing the cap.

Failure to follow this procedure may result in fuel spraying out of the system and causing personal injury.

WARNING

- No smoking or open flames while refueling.
- Only refuel in an area approved for refueling with adequate ventilation.

Smoking or open flames may result in fire or explosion causing severe personal injury and/or property damage.

Inadequate ventilation may result in severe personal injury due to oxygen deprivation or fuel poisoning.

1. Park in an area approved for refueling.
2. Set park brake.
3. Turn engine off.
4. Slowly removed fuel cap. If hissing is heard then pause until hissing stops before fully removing the cap.
5. STOP adding fuel when the automatic nozzle shut off occurs or fuel is visible in the inlet if filling from a can. DO NOT TOP OFF!
6. Reinstall the fuel cap; tighten the cap until it clicks a couple of times.
7. Immediately clean up any fuel spills.

Vehicle Maintenance

Daily Inspection

The following items shall be inspected once every day before the vehicle is put into service:

- External frame damage (body).
- Operation of all lights and warning alarms.
- Proper operation of all instrument panel gauges and warning lights.
- Smooth and proper operation of seat belts (if equipped).
- Brake fluid level.
- Inspect for leaking fluids, grease, gasoline.
- Tire tread or sidewall damage.
- Proper operation of transmission shift lever and starter interlocks.
- Proper operation of adjustable seat mechanisms.
- Smooth and proper operation of all controls such as but not limited to:
 - Throttle pedal
 - Brake pedal
 - Parking brake
 - Steering
 - Horn
 - Etc.
- Proper operation of all locking mechanisms such as but not limited to:
 - Hood latches
 - Cargo box's
 - Cab doors
 - Etc.
- Proper operation of all interlocking switches such as but not limited to:
 - Operator presence switch
 - Neutral start switch
 - Etc.

NOTICE

The front axle wheel bearings must be inspected and adjusted after the first 15 hours of operation. Failure to adjust the bearings will result in premature failure.

Pre-Operation Inspection

The following items shall be inspected every time before the vehicle is driven:

- Confirm all removable seat cushions are correctly installed and secured in position. .
- Rear and side view mirror adjustments.
- Steering operation.
- Brake operation (service and park brake).
- Tire pressure (visual inspection only).
- Trailer hitch operation, latch, and wear.

INTERLOCK SWITCH INSPECTION

The interlock switches should disable engine operation when activated. Perform the following to confirm proper operation. If any one test fails, then immediately remove the vehicle from service and refer repair to a qualified technician.

WARNING

These procedures may result in unexpected starting of the engine.

- All procedures shall be performed in an area that allows for possible movement of the vehicle and room to safely stop the vehicle if it moves.
- Engine may rotate and start during these procedures. Keep all body parts clear of rotating parts
- Make sure all rotating parts are clear of any objects and free to rotate..
- **DO NOT** allow any personnel to stand in front or behind the vehicle while performing these procedures.

Failure to follow the above instructions may result in severe bodily injury and/or property damage.

DO NOT bypass, modify, or disable any interlock switch. Doing so could result in unexpected movement of the vehicle causing severe bodily injury and/or property damage.

Neutral Start Switch

The neutral start switch prevents engine starting unless the shift lever is in the Neutral position.

1. Firmly set the park brake.
2. Hold firm pressure on the service brake pedal.
3. Place the shift lever in all positions available and attempt to crank the engine.
 - The engine should crank **ONLY** when in Neutral.

Operator Presence Switch

The operator presence switch prevents engine operation unless the driver is in the approved operator position.

1. Firmly set the park brake.
2. Start the engine.
3. Make sure transmission is in Neutral.
4. Get off of the driver seat.
 - The engine should shut off.

Maintenance Schedule

Most of these items shall only be performed by a qualified technician. Refer to the vehicle, engine, or transmission service manual for details.

Problems found during an inspection shall be repaired before the vehicle is put back into service.

First 15 hours

- Re-torque wheel nuts.
- Inspect all hardware for tightness.
- Adjust front wheel bearings.

Every 25 hours/Every Week

- All daily items plus the following:
 - Service air filter pre-cleaner.
 - Check engine oil level.
 - Check tire air pressure.
 - Tire damage.

Every 100 hours

- All 25 hour items plus the following:
 - Inspect for fluid leaks.
 - Check brake fluid level.
 - Tighten steering shaft couplers and U-joints.
 - Wash battery and terminals.
 - Check starter interlocks for correct operation.
 - Remove cooling shrouds and clean.
 - Clean exterior of engine.
 - Change engine oil (every 100 hours or yearly, whichever occurs first).
 - Replace paper air filter.
 - Inspect tire tread wear.
 - Inspect and tighten all hardware (First 100 hours, then ever 500 hours).

Every 200 hours

- All 100 hour items plus the following:
 - Change oil filter.
 - Change fuel filter.

Every 600 hours

- All 200 hour items plus the following:
 - Inspect and tighten all hardware.
 - Test battery.
 - Check battery electrolyte level (maintenance free only).
 - Replace spark plugs.
 - Inspect drive belt for cracking.
 - Inspect all steering linkages and hardware.
 - Lubricate the vehicle.
 - Tighten all electrical connections.
 - Inspect all wiring for fraying, cracks, wear.
 - Re-torque the wheel nuts.
 - Adjust park brake.

Every 1,200 hours

- All 600 hour items plus the following:
 - Align front end.
 - Rotate tires.
 - Replace drive belt.
 - Replace secondary sheave ramp shoes.
 - Inspect/adjust front wheel bearings.
 - Inspect steering king pins.
 - Inspect suspension bushings.
 - Inspect suspension bumpers.
 - Inspect brake shoes/pads.
 - Inspect frame for damage.

Every 2,400 hours

- All 1200 hour items plus the following:
 - Clean and repack front wheel bearings, change seals.
 - Change drive axle oil.
 - Flush and replace the brake fluid.

Maintenance Guidelines for Severe Duty Applications

The above maintenance schedule is based on the average typical application. If the vehicle is operated under "severe conditions", service procedures shall be conducted more frequently than specified. The frequency of service under severe conditions is determined by the use of the vehicle. The owner/operator must evaluate the operating environment to determine the increase in maintenance frequency.

In addition, the entire vehicle shall be inspected monthly for signs of damage.

The following list is meant as a guide and is not all-inclusive of a "severe duty" application.

- Operation in excess of 100 hours per month.
- Extreme temperature.
- Bumpy, dusty, or ill maintained roads.
- Excessively wet areas.
- Corrosive or contaminated areas.
- Frequent loading of the vehicle at or near capacity.

FLUID LEVELS

WARNING

Continuous contact with used motor oil has caused skin cancer in laboratory animal tests. Avoid prolonged contact. Wash skin with soap and water. Launder or discard soiled clothing.

Engine Oil

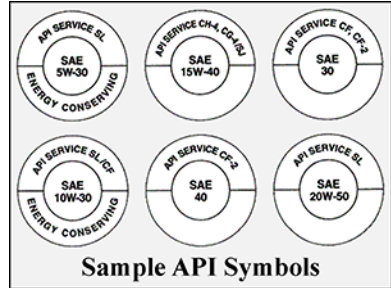
Taylor-Dunn does not recommend the use of oil additives.

Before checking engine oil level: Turn engine off and wait a couple of minutes to allow oil to return to the crankcase.

The oil level should be between the F and L marks on the dipstick (see illustration).

Only add oil if level is BELOW the L mark on the dipstick.

Only use oil displaying the appropriate American Petroleum Institute (API) Symbol on the container.



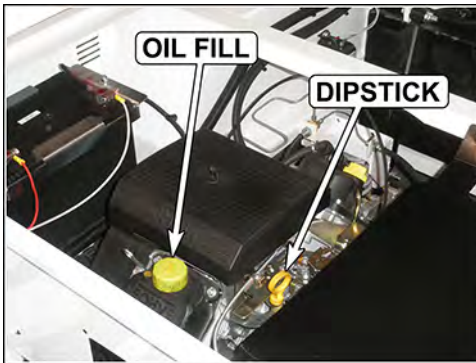
Oil type and capacities

Petroleum or synthetic detergent oils that meet API Class SJ or higher.

1.7 to 1.9 US quart (1.6 - 1.6 liter).

Viscosity

Ambient Temperature	Viscosity
-20°F to 32°F (-30C to 0C)	5W30



0°F to >100°F (-18C to 38C)	10W30
50°F to >100°F (10C to 38C)	SAE30



Dipstick Range

Engine Coolant

This engine is air cooled and does not require coolant.

AIR FILTER

NOTICE

Never run the engine without an air filter installed, a damaged air filter element, or damaged air intake components. Missing or damaged intake components will lead to engine ingestion of dirt, dust, and or other debris that will damage the engine.

1. Remove the foam pre-cleaner and wash in warm water with detergent. Rinse with fresh water and allow to air dry.
2. Inspect the foam pre-cleaner and replace if any holes or tears are found.
3. Clean any loose debris and dirt from around the paper element.
4. Remove the paper element and discard.
5. Inspect the rubber seal and replace if any damage is found.
6. Install new paper element.
7. Saturate the foam pre-cleaner with clean engine oil then squeeze out excess oil.
8. Install pre-clear over the paper element..

Battery Maintenance

DANGER



- Battery electrolyte is poisonous and corrosive. It contains sulfuric acid. Avoid contact with skin, eyes, or clothing. Wear rubber gloves and face safety shield while servicing batteries. **DO NOT INGEST!** This will result in severe bodily injury.
- Wear a full face shield when working on or around batteries. A full face shield will help protect your eyes from battery electrolyte. If battery electrolyte gets in your eyes, immediately flush your eyes with large amounts of water and seek medical attention.
- Wear heavy duty long rubber gloves when working on or around batteries. If battery electrolyte gets on your skin, immediately flush with large amounts of water to prevent chemical burns.
- Explosive mixtures of Hydrogen gas are present within battery cells at all times. Do not work with or charge batteries in an area where open flames (including gas furnace or water heater pilots), sparks, cigarettes, or any other sources of combustion are present. Always provide ample ventilation in rooms where batteries are being charged. Failure to do so may result in severe bodily injury and/or property damage.
- Lead is poisonous. Batteries and battery terminals contain lead and lead components. Avoid touching the battery terminals and always thoroughly wash hands after servicing the batteries.
- A battery is a live electrical source. It cannot be disconnected or neutralized. Do not drop any tool or conductive object onto the battery. A conductive object that comes in contact with the battery terminals will initiate a short circuit of the battery. This could cause the battery to explode resulting in severe bodily injury and/or property damage.
- Do not leave cables on batteries that have been removed from the vehicle. Cables left on batteries could cause a short circuit resulting in battery explosion, severe bodily injury and/or property damage.

NOTICE

- Battery electrolyte will stain and corrode most surfaces. Immediately and thoroughly clean any surface outside of the battery that the battery electrolyte comes in contact with. Failure to clean may result in property damage.
- When torquing battery hardware, use a backup wrench on the battery bolt and tighten the nut. Failure to use a backup wrench may damage the battery post.
- **DO NOT** remove the caps on a maintenance free battery. Removing the caps will damage or destroy the battery seals resulting in premature battery failure.

Cleaning

⚠ WARNING

- 1) Refer to battery warnings at the start of this chapter.
- 2) Park the vehicle in an authorized service area and turn the engine OFF.
- 3) Place the shift lever in Neutral if Park is not available.
- 4) Set the parking brake.

Note: If the terminals show signs of excessive corrosion then refer cleaning to an authorized technician.

5. Dry dirt can be readily blown off with low-pressure air or brushed off.
6. Wetness or wet dirt on the battery indicates battery acid. Using a nonmetallic brush with flexible bristles, wash the battery off with a strong solution of baking soda and hot water (one pound of soda to a gallon of water). Continue until all fizzing stops, which indicates that the acid has been neutralized. Then rinse thoroughly with clear water. DO NOT get any of the solution into the battery cells.

Watering

Non-maintenance free batteries only.

⚠ WARNING

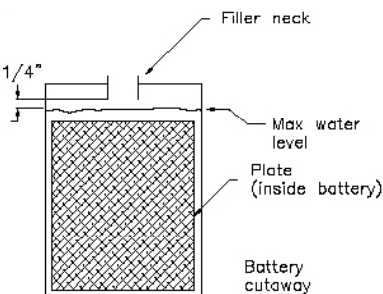
- 1) Refer to battery warnings at the start of this chapter.
- 2) Park the vehicle in an authorized service area and turn the engine OFF.
- 3) Place the shift lever in Neutral if Park is not available.
- 4) Set the parking brake.

⚠ CAUTION

Do not overfill the battery. Over filling the battery may cause the batteries to boil over and result in chemical burns and/or property damage.

Note: If the terminals show signs of excessive corrosion then refer cleaning to an authorized technician.

5. Clean the battery. Refer to Cleaning section for information on cleaning the battery.
6. Check the electrolyte level in all battery cells. If low, fill to the correct level with distilled water using part number 77-201-00 battery filler. Never add additional battery electrolyte to the batteries.
7. Remove the blocks from the wheels and test drive.



Charging

A dead battery may be a result of a faulty battery or charging system.

If you have a dead battery then refer charging and testing to an authorized technician.

TIRES

WARNING

Incorrect tire inflation can result in sudden failure of the tire and/or braking / steering problems leading to loss of control of the vehicle.

Never exceed the maximum pressure as indicated on the side wall of the tire. Exceeding the maximum pressure may cause explosive failure of the tire resulting in severe bodily injury.

Air pressure

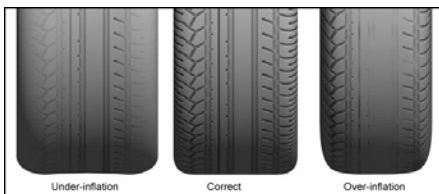
Maintaining the correct tire pressure is important to the safe operation of the vehicle as well as ensuring long tread life.

Under inflated tires result in:

- Excessive tire side wall flexing that can result in sudden tire failure.
- Excessive tread wear resulting in shortened tire life.

Over inflated tires result in:

- Tire explosion due to excessive pressure.
- Reduced road surface traction.
- Increased vibration from the road surface.
- Excessive tread wear resulting in shortened tire life.



Unequal tire inflation may result in:

- Uneven braking and loss of control of the vehicle.
- Steering pulling to the left or right.

Only check the tire pressure when the tire is cold. When checking tire pressure, you must check all tires including any spare tires.

The correct tire size and pressure can be found in the specifications list in the manual.

Note: The front and rear tires may have a different tire pressure specification.

Tire Tread Wear

WARNING

DO NOT operate a vehicle if the cord is visible on any tire (see illustration). A tire in this condition may suddenly fail at any time resulting in loss of control of the vehicle.

It is important to periodically inspect the tread on each tire for wear. Driving with inadequate tread increases the risk of losing control of the vehicle due to hydroplaning on a wet road surface. It also increases the risk of a flat tire due to road debris. Extreme tire wear can result in sudden tire failure and loss of control of the vehicle.

Refer to the maintenance schedule in this manual for the recommended tire inspection interval.

Minimum recommended tread depth is 1/16 inch (1.5 mm). Depending on the tires installed on your vehicle, there may be series of tread depth wear indicators around the circumference of the tire. They will appear as 1/2 inch (13 mm) bands across the tread as the tire approaches its wear limit (see illustration). The tire shall be replaced if any tread depth indicator can be seen or any part of the tread depth is 1/16 inch or less.



Changing a Tire/Wheel assembly

WARNING

If you have a flat tire while driving your vehicle, it is highly recommended that you slowly and carefully drive the vehicle off of any main road or highway before attempting to change the tire. Attempting to change a tire on a main road or highway exposes you to extreme danger of being run over by other vehicles.

WARNING

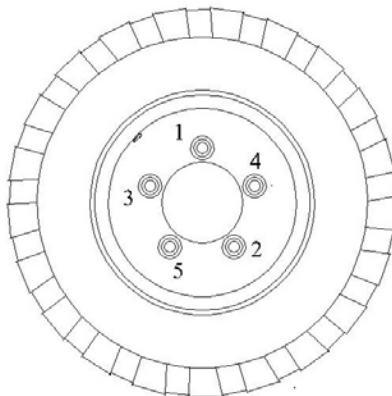
- 1) Park the vehicle on a hard level surface off of any main road or highway.
- 2) Turn the engine OFF.
- 3) Place the shift lever in Neutral if Park is not available.
- 4) Set the park brake.
- 5) Block the wheels on the opposite side of the tire to be changed.

WARNING

When lifting the vehicle, always use a hoist with lifting strap, or a jack of adequate capacity. Use jack stands to support the vehicle before starting any repairs. Failure to use lifting and support devices of rated load capacity may result in severe bodily injury.

Note: A spare tire, jack, or lug wrench is not attached to the vehicle.

6. Loosen the wheel nuts (do not remove) before raising the tire off of the ground.
7. Raise the tire to be changed off of the ground and support with a jack stand.
8. Remove the wheel nuts and tire/wheel assembly.
9. Install the replacement tire/wheel assembly.
10. Install the wheel nuts and cross tighten per illustration below to:
 - 85 foot pounds (122-149 Nm)
11. Check the tire for proper inflation.
12. Lower the vehicle to the ground and remove the blocks from the wheels.
- 13. Wheel nuts shall be checked for tightness after 24 hours of operation.**



5-Bolt Pattern

Tire Rotation

Front and rear tires as well as left and right tires can wear at different rates. It is important to periodically rotate your tires to extend your tire life. Refer to the maintenance schedule in this manual for the recommended interval.

Replacing a Tire

⚠ WARNING

Tire replacement shall only be performed by a qualified technician trained in tire replacement.

Improper tools or procedures can result in explosion of the tire/wheel assembly causing severe bodily injury or death.

⚠ WARNING

Never mix tire types, tire sizes, speed ratings, or load capacity.

Only use the tire types and sizes approved for use on this model. Contact your authorized Taylor-Dunn dealer to confirm approved tire types and sizes.

Mixing tires or installing a tire that is not approved may:

- Cause handling problems with the vehicle.
- Cause sudden tire failure due to mechanical interference.
- Accelerated tire wear and premature failure.

Any of the above may cause loss of control of the vehicle resulting in a collision or accident with severe bodily injury.



CLEANING

Glass

The front, rear, and hard door windows are made of standard automotive glass and can be cleaned with any standard household glass cleaner.

Plastic Windows

Soft door windows are made of clear soft plastic that is easily scratched and can be damaged from some cleansers or solvents.

To remove any road tar or grease, Use a 70% isopropyl alcohol solution and soft cloth then wash with water and dry with a soft cloth.

- Do not use any abrasives or abrasive cleaners.
- Do not use any chemical cleaners or cleaning solvents.

Seats / Soft Doors

Clean your seats with any standard automotive vinyl cleaner.

Interior

NOTICE

DO NOT spray the interior with water. Large amounts of water may damage the electronics in the dash.

Use a mild liquid detergent in warm water to wipe down the interior of your vehicle.

Exterior Body

NOTICE

DO NOT use an automated car wash facility of any type. This vehicle is not designed to fit in any automated car wash and it is likely that the vehicle will be damaged.

Use any standard automotive exterior car wash solution. Do not use any abrasive cloths or cleaners.

Finish with a quality automotive wax to preserve the finish of your vehicle.

Cleaning the Seat Belts

Clean the safety belts with any mild soap solution that is recommended for cleaning upholstery or carpets. Do not bleach or dye the belt webbing because this may weaken it.

Under Carriage

For long life, it is important to keep the under carriage of the vehicle clean from caked on dirt, mud, or road salt. Any of these substances will cause accelerated corrosion of the frame and lead to premature failure.

When cleaning the under carriage, be careful not to get any cleaning solutions or excessive water into any electrical compartments.

Battery

Refer to the Battery Maintenance section.

Storing and Returning to Service

If your vehicle will not be operated for several weeks then it should be properly prepared for storage. Information regarding service and preparation for storing or returning to service can be found in the vehicle service manual

Preparation of storage or returning a vehicle to service shall only be performed by authorized technician.

Standard Specifications

ITEM		SPECIFICATION
Occupancy		1 Driver, 1 Passenger
	Max occupant weight	250 pounds each (113 kg)
Dimensions		130.5 L x 44 W x 51.5 H Inches 331 L x 112 W x 131 H Centimeters
Wheel base		62 inches (157.4 Centimeters)
Ground Clearance		4 Inches (10.2 Centimeters)
Turning Radius		137 Inches (348 Centimeters)
Weight (no fuel)		1,410 pounds (639.6 kg)
Battery		12 Volt Group 24 Maintenance Free
Maximum Load		1500 Pounds (680 kg)
Deck		44 x 77 inches (111.7 x 195.5 Centimeters)
Engine		2 Cylinder 19 Horsepower
Fuel	Capacity	Unleaded Gasoline
		9 Gallons (34 liters)
Fuel System		Mechanical fuel pump
Cooling System		Forced air
Transmission		CVT Belt
Drive Axle		1-speed with forward and reverse
Suspension		Leaf spring
Electrical System		12 Volt Negative Ground
Brakes		Hydraulic four wheel: Front Disc, Rear Drum. Hand Park Brake.
Maximum Speed		18 mph (29 kph)
Steering		Rack and Pinion
Tires		5.70 x 8 Load Range C
Pressure Front		70 psi (4.8 bar)
Pressure Rear		70 psi (4.8 bar)
Instrumentation		Fuel Gauge, Low Oil Pressure Indicator
Lighting Accessories		LED Headlight, Taillight, Brake Light

*See definition of Draw Bar Pull in Towing section of this manual
Specifications subject to change without notice.

Index

A		I		Headlight	19
Accidents	29	Identify		Horn	20
Air Filter		Vehicle	16	Ignition	19
Monitor	41	Interlock Switch Inspection	38	Operator Presence	21
Approved Operator Position	8			Strobe	19
				Windshield Wiper	19
B		L		T	
Battery		Licensing		Tip Over	24
Charging	43	Vehicle	15	Tires	
Cleaning	43	Light		Air Pressure	44
Maintenance	42	Low Oil	19	Changing	45
Watering	43	Liquid loads	30	Replacing	46
Battery filler	43	Load Capacity	30	Rotation	46
Brake				Tread Wear	44
Foot	20	M		Towing	
Parking	20	Maintenance		Trailer	32
		Battery	42	Vehicle	33
		Pre-Operation Inspection	37	Training	10
		Schedule	39	Maintenance	10
		Severe Duty	39	Operator	10, 18
		Maximum load capacity	30	Service	10
		Modifications	11, 12		
				V	
		O		Vehicle Operation	22
		Operator Training	10, 18	Driving	28
		OPS	8	Loading Cargo	31
				Parking	29
		P		Starting	26
		Parking	29	Towing Trailers	32
		Parking Brake	20		
		Pedal		W	
		Foot Brake	20	Warning icons	9
		Throttle	20	Web site, Taylor-Dunn	18
		Pets	29, 31	Welding	11
		Pets, Transporting	29, 31		
		Pre-Operation Inspection	37		
				R	
		R		Refueling	36
		Refueling	36	Replacement Parts	12
		Returning to Service	47		
				S	
		S		Seat Adjust	20
		Seat Belts	24	Seat Belts	24
		Cleaning	47	Cleaning	47
		Lap Belt	25	Lap Belt	25
		Maintenance	25	Maintenance	25
		Shoulder Belt	25	Shoulder Belt	25
		Use	24	Use	24
		While Pregnant	25	While Pregnant	25
		Serial Number, Vehicle	16	Serial Number, Vehicle	16
		Severe Duty	39	Severe Duty	39
		Shift Lever	20	Shift Lever	20
		Signal Words		Signal Words	
		Cautions	9	Cautions	9
		Danger	9	Danger	9
		Notice	9	Notice	9
		Warning	9	Warning	9
		Specifications	48	Specifications	48
		Starting the Engine	26	Starting the Engine	26
		Jump Starting	27	Jump Starting	27
		LPG	26	LPG	26
		Steering	21	Steering	21
		Stopping the Engine	26	Stopping the Engine	26
		LPG	27	LPG	27
		Storing	47	Storing	47
		Switch		Switch	
		Directional	21	Directional	21
		Hazard (4-way)	21	Hazard (4-way)	21
C		T		W	
Cargo, Loading	31			Warning icons	9
Choke	20			Web site, Taylor-Dunn	18
Cleaning				Welding	11
Batteries	47				
Battery Charger	47				
Exterior Body	47				
Glass	47				
Interior	47				
Plastic Windows	47				
Seats	47				
Soft Doors	47				
Under Carriage	47				
D		O		V	
Daily Inspection	37			Vehicle Operation	22
Data plate	16			Driving	28
Dealer locator	3			Loading Cargo	31
Decals	9			Parking	29
Draw Bar Pull	32			Starting	26
Driving	28			Towing Trailers	32
Parking	29				
Reversing Direction	29				
Selecting Gear Range	29				
Stopping	29				
E		P		W	
Engine		Parking	29	Warning icons	9
Oil Type	40	Parking Brake	20	Web site, Taylor-Dunn	18
Starting	26	Pedal		Welding	11
		Foot Brake	20		
		Throttle	20		
		Pets	29, 31		
		Pets, Transporting	29, 31		
		Pre-Operation Inspection	37		
		R			
		Refueling	36		
		Replacement Parts	12		
		Returning to Service	47		
		S			
		Seat Adjust	20		
		Seat Belts	24		
		Cleaning	47		
		Lap Belt	25		
		Maintenance	25		
		Shoulder Belt	25		
		Use	24		
		While Pregnant	25		
		Serial Number, Vehicle	16		
		Severe Duty	39		
		Shift Lever	20		
		Signal Words			
		Cautions	9		
		Danger	9		
		Notice	9		
		Warning	9		
		Specifications	48		
		Starting the Engine	26		
		Jump Starting	27		
		LPG	26		
		Steering	21		
		Stopping the Engine	26		
		LPG	27		
		Storing	47		
		Switch			
		Directional	21		
		Hazard (4-way)	21		
F		T		W	
Feedback	3			Warning icons	9
Fluid Levels				Web site, Taylor-Dunn	18
Coolant	40			Welding	11
Engine Oil	40				
Foot brake pedal	20				
Fuel					
Gasoline	34				
Fuel Gauge	19				
G		O		V	
Gauge				Vehicle Operation	22
Fuel	19			Driving	28
Glossary of Terms	8			Loading Cargo	31
				Parking	29
				Starting	26
				Towing Trailers	32
H		P		W	
Horn Switch	20	Parking	29	Warning icons	9
Hour Meter	19	Parking Brake	20	Web site, Taylor-Dunn	18
		Pedal		Welding	11
		Foot Brake	20		
		Throttle	20		
		Pets	29, 31		
		Pets, Transporting	29, 31		
		Pre-Operation Inspection	37		
		R			
		Refueling	36		
		Replacement Parts	12		
		Returning to Service	47		
		S			
		Seat Adjust	20		
		Seat Belts	24		
		Cleaning	47		
		Lap Belt	25		
		Maintenance	25		
		Shoulder Belt	25		
		Use	24		
		While Pregnant	25		
		Serial Number, Vehicle	16		
		Severe Duty	39		
		Shift Lever	20		
		Signal Words			
		Cautions	9		
		Danger	9		
		Notice	9		
		Warning	9		
		Specifications	48		
		Starting the Engine	26		
		Jump Starting	27		
		LPG	26		
		Steering	21		
		Stopping the Engine	26		
		LPG	27		
		Storing	47		
		Switch			
		Directional	21		
		Hazard (4-way)	21		







WARNING

Operating, servicing and maintaining a passenger vehicle or off-highway motor vehicle can expose you to chemicals including engine exhaust, carbon monoxide, phthalates, and lead, which are known to the State of California to cause cancer and birth defects or other reproductive harm. To minimize exposure, avoid breathing exhaust, do not idle the engine except as necessary, service your vehicle in a well-ventilated area and wear gloves or wash your hands frequently when servicing your vehicle.

For more information go to www.P65Warnings.ca.gov/passenger-vehicle.

Taylor-Dunn® Mfg.
2114 W. Ball Rd.
Anaheim, CA 92804
(800)-688-8680
(714) 956-4040
(FAX) (714) 956-0504

Visit our Web site: www.taylor-dunn.com