



TAYLOR-DUNN®

Commercial and Industrial Vehicles Since 1949

Operator's Manual Model SC-100 / SC-90 AC System



The best way to go about your business

Serial Number Range:

Starting: 209993

Ending: See Introduction Chapter

Use with Model Numbers:

SC-090-24AC

SC-100-24AC

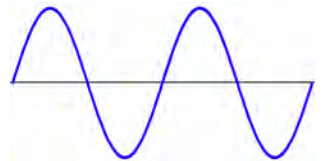
SC-100-36AC



WARNING

READ THIS MANUAL BEFORE OPERATION OR PERFORMING MAINTENANCE.

This manual contains important information regarding the safe operation and maintenance of this vehicle. This manual should be kept with the vehicle.



My Vehicle information

Serial Number: _____.

Date Purchased: _____.

Date Delivered: _____.

Dealer Purchased From: _____.

Salesman Name: _____.



Your satisfaction is out #1 goal. If you have questions or concerns with your vehicle, please contact your sales Representative or Service Advisor at your local dealership. Taylor-Dunn has a worldwide dealer and distribution network to provide replacement parts and service for our vehicles. Refer to our web site, www.taylor-dunn.com, for a dealer lookup application.

Originally Published 9/1/2019
Revision C, 8/18/2020, contents subject to change without notice
Taylor-Dunn® Mfg.
2114 W. Ball Rd.
Anaheim, CA 92804
(800)-688-8680
(714) 956-4040
(FAX) (714) 956-0504

Visit our Web site: www.taylor-dunn.com

CONTACT INFORMATION

Service, Parts, Sales:

Taylor-Dunn has a network of dealers distributed around the globe to support our vehicles. Information regarding vehicle sales, replacement parts, or service should be obtained through your local dealer.

A dealer locator can be found on the Taylor-Dunn website at www.taylor-dunn.com.

If you do not have access to the internet, you can call the factory direct at:

01 (714) 956-4040

Feedback regarding this or any Taylor-Dunn manual can be sent to:

Taylor-Dunn Manufacturing
Attn: Tech Writer
2114 West Ball Road
Anaheim, CA 92804



The Taylor-Dunn Corporation:

Leading Provider of Commercial & Industrial Vehicles since 1949

Taylor-Dunn Manufacturing:

From the day we shipped our first vehicle in 1949, we have pursued a singular goal: to build tough, rugged, dependable vehicles to help our customers move personnel, equipment, and materials. It's that simple. For over sixty years, our standard and custom vehicles - Burden Carriers, Personnel Carriers, Stock Chasers, Electric Carts, Tow Tractors & more - have been the leading solution for customers in a broad range of industrial, commercial, and ground-support markets.

Decades of experience are an invaluable asset, and it is an asset we cherish and protect. Our guiding principle is to provide application-specific solutions, which are reliable, efficient, and economical.

Our domestic and international network of quality Taylor-Dunn Dealers and Parts & Service Support keeps our customers moving.

Tiger Tractor:

Tiger manufacturing has become a leading manufacturer of internal combustion engine industrial tractors and ground support equipment. With tractor capacities ranging from 3,000 - 12,000 pounds drawbar pull, they are ideal for industrial applications as well as aircraft ground support. As with all Taylor-Dunn vehicles; quality, service, support and reliability are built into all Tiger Tractor products.

Shown below is just a small sample of what Taylor-Dunn has to offer to keep your business moving:



Table of Contents

Contact Information	3	Direction Indicator	20
The Taylor-Dunn Corporation:	4	Battery Status / Hour Meter	20
Introduction	7	Fault Messages (DTC)	20
Who Should Read This Manual	7	BSI / Speed	20
About This Manual	7	<u>Vehicle Operation</u>	<u>21</u>
Glossary of Terms.....	8	General Safety Guidelines	21
Conventions	10	Collisions or Accidents	22
Signal Words and Their Definitions:.....	10	Starting.....	23
Safety Alert Message	10	Driving	24
Responsibilities	11	Loading Cargo	26
Of the Owner.....	11	Vehicle Load Capacity, Definition.....	26
Of the Operator.....	11	Transporting Pets	27
Of the Service Personnel.....	11	Towing	28
Vehicle Modifications	12	Draw Bar Pull (DBP), Definition	28
Replacement Parts	13	Hitch Release.....	29
Using Non-OEM Replacement		Towing the Vehicle	30
Components.....	13	Vehicle Tie Down Points	31
About Your Vehicle	14	<u>Charging Your Vehicle</u>	<u>32</u>
Licensing Requirements	14	Generic Safety Guidelines	32
Vehicle compliance	14	Charging Time.....	33
How to Identify Your Vehicle	15	New Battery Break In	33
Data Plate	15	AC Power Source	33
Where to Find Data Plate and Serial		Lester Summit II Charger.....	34
Number	15	<u>Troubleshooting</u>	<u>36</u>
Taking Delivery of Your		Not Running	36
Vehicle	16	Running Slow.....	36
What To Do If a Problem is		Runs Only in One Direction	36
Found.....	16	Hard to Steer.....	36
Driver Training	17	Diagnostic Trouble Codes (DTC).....	37
Driver Qualifications	17	Storing and Returning to	
Vehicle Controls	18	Service	38
1: Start Switch	18	Storing Your Vehicle	38
2: Headlight Switch	18	Returning to Service	38
3: Strobe Light Switch	18	<u>Vehicle Maintenance</u>	<u>39</u>
4: Combination Display	18	Daily Inspection.....	39
6: Hi-Low Speed Switch	18	Pre-Operation Inspection	39
Steering	19	Interlock Switch Inspection.....	40
Parking Brake	19	Start Switch	40
Operator Presence Switch	19	Operator Presence Switch	40
Throttle/Brake Treadle	19	Charger Interlock Switch	40
Combination Dash Display.....	20	Maintenance Schedule	41
		Maintenance Guidelines for Severe Duty	
		Applications.....	41

Battery Maintenance.....	43
Cleaning.....	44
Watering.....	44
Tires.....	45
Air pressure.....	45
Tire Tread Wear	45
Changing a Tire/Wheel assembly	46
Tire Rotation.....	47
Replacing a Tire	47
Cleaning	48
Seat Cushions.....	48
Exterior Body	48
Battery Charger.....	48
Under Carriage	48
Batteries.....	48
Control Panel	48
 Standard Specifications	
<u>SC-90</u>	<u>49</u>
 Standard Specifications	
<u>SC-100</u>	<u>50</u>
<u>Index</u>	<u>51</u>



Introduction

Who Should Read This Manual

This manual is intended for use by anyone operating or performing routine maintenance on this vehicle. Each person should be familiar with the parts of this manual that apply to their use of this vehicle.

About This Manual

This manual is valid only for the serial numbers listed on the front cover. If the ending serial number is blank, then this manual was for current production vehicles when printed. If you did not receive this manual with the vehicle, you should confirm this manual is valid for your serial number at the Taylor-Dunn web site. A place to record your vehicle information is provided on the inside front cover.

This manual is subject to change without notice. Updates are available through your dealer or the Taylor-Dunn web site at www.taylor-dunn.com.

Taylor-Dunn is not to be held liable for errors in this manual or any consequential damage that results from the use of this manual.

The purchase of this vehicle shows a belief in high quality products manufactured in the USA.

Taylor-Dunn, a leading manufacturer of electric burden and personnel carriers since 1949, wants to be sure this vehicle provides years of reliable service. Please continue to read this manual and enjoy this high quality Taylor-Dunn vehicle.

This manual is to serve as a guide for the operation and maintenance of your Taylor-Dunn vehicle. Taylor-Dunn has made every effort to include as much information as possible about the operation and maintenance of this vehicle.

This manual contains information about the standard equipment and options available for this model. This vehicle may not be equipped with all available options. If you do not know which information applies to your vehicle, then you should contact your dealer.

Included in this manual are:

- Vehicle Description
- Safety Rules and Guidelines
- Operational Information
- Operator Responsibilities
- Owner Responsibilities
- Control Operation and Location Information
- Maintenance Information

Before operating or performing maintenance on this or any other Taylor-Dunn vehicle, read the appropriate Taylor-Dunn manual.

Please, be aware of all cautions, warnings, instructions, and notes contained in this manual.

WARNING

The only personnel authorized to repair, modify, or adjust any part of this or any Taylor-Dunn vehicle is a factory authorized service technician. Repairs made by unauthorized personnel may result in damage to the vehicles systems which could lead to an unsafe condition resulting in severe bodily injury and/or property damage. Unauthorized repairs may also void the vehicles warranty.

GLOSSARY OF TERMS

There are a number of words and phrases used in this document that may have a different, special, or specific definition when use in the context of this document.

Approved Operator Position Sit down vehicle	The operator shall be seated in the operator seat with back up against the operator seat back cushion. Additional back support may be added as needed. The back support shall be fastened to the operator seat back cushion to prevent it from falling off the vehicle or onto the seat cushion. The operator's left foot shall be on the floorboard. The right foot should be positioned for easy access to the brake or throttle pedals. Both hands should be on the steering wheel while the vehicle is in motion.
Approved Operator Position Stand up vehicle	The operator shall be standing on the operator platform with weight about equally distributed between left and right feet. The left foot shall be placed on the left side of the operator platform to properly engage the operator presence switch. Both hands shall be on the steering wheel while the vehicle is in motion.
BDI	Battery Discharge Indicator. Same as BSI:
BSI	Battery Status Indicator. The gauge on the dash showing the battery charge level. Also can be referred to as BDI.
Caution (signal word)	Refer to Signal Words and Their Definitions.
Danger (signal word)	Refer to Signal Words and Their Definitions.
Direction Control Switch	A switch typically located on the dash that is used to select the direction of travel.
DBP	Draw Bar Pull (see below).
Draw bar pull	The force seen by the trailer hitch at the rear of the vehicle.
Electrolyte	The fluid inside of a battery.
Fault	A "fault" is something that happens when the motor speed control system detects a problem with the vehicle. Some faults will prevent operation of the vehicle.
FLA battery	Flooded Lead Acid Battery. A battery that requires regular maintenance of electrolyte level.
FS-1	Switch inside of the throttle module that starts the vehicle moving.
High/Low	High speed, Low speed.
LOBB	Lift Out Battery Box, a type of removable battery.
Moderate injury	An injury treatable by first aid and/or follow up treatment by a doctor or other professional medical personnel.
Notice (signal word)	Refer to Signal Words and Their Definitions.
OPS	"Operator Protective Structure": Steel cab or cage around the occupants.
Regen	Short term for Regenerative Braking. "Regen" is the braking action provided by the motor. Similar to downshifting in an automobile. Energy created during regen is returned to the battery.
ROBB	Roll Out Battery Box a type of removable battery.
Seating position:	When used in the context of occupant seating positions, "seat" is defined as a single seat cushion or a span of 20 inches on a bench seat.

Sequence Fault	A type of fault that disables the vehicle. Occurs when the switches require to operate the vehicle are not operated in the correct order.
Service Brake	The primary braking system used to stop the vehicle.
Severe bodily injury	An injury that requires immediate treatment by a doctor or other professional medical personnel. Not first aid.
Signal word	A word used to define hazards to operator, passengers, service technician, or personnel in the immediate vicinity of the vehicle.
SLA battery	Sealed Lead Acid Battery. A battery that does not require maintenance of electrolyte level.
Small children	Children that must be transported in a child seat as defined by federal or state motor vehicle standards.
SRO	Static Return to Off. A fault action that disables the vehicle.
Start Switch	A switch typically located on the dash that enables the vehicle for operation. This switch may, or may not require a key to operate.
Warning (signal word):	Refer to Signal Words and Their Definitions.



CONVENTIONS

Symbols and/or words used to define Dangers, Warnings, Cautions, and Notices are found throughout this manual. The “Words” in this context will be referred to as “Signal words.” The words defined here as “signal words” may be used elsewhere in the text of this document without being a signal word. When used as a signal word, the signal word will be enclosed in a solid rectangle with white background (example below).

Signal Words and Their Definitions:

DANGER: This signal word will be accompanied by the safety alert symbol (see below). “DANGER” will indicate a hazard that, if not avoided, WILL result in death or serious bodily injury to yourself, the operator or passengers of the vehicle, or people in the immediate area of the vehicle.

WARNING: This signal word will be accompanied by the safety alert symbol (see below). “WARNING” will indicate a hazard that, if not avoided, may result in death or serious bodily injury to yourself, the operator or passengers of the vehicle, or people in the immediate area of the vehicle.

CAUTION: This signal word will be accompanied by the safety alert symbol (see below). “CAUTION” will indicate a hazard that, if not avoided, may result in minor or moderate injury to yourself, the operator or passengers of the vehicle, or people in the immediate area of the vehicle.

NOTICE: This signal word will not be accompanied by the safety alert symbol. “NOTICE” will indicate a condition that if not avoided may result in property damage. “Property” is defined and the vehicle, components in the vehicle and/or the surrounding area such as buildings, other vehicles, etc.

Safety Alert Message

Important information notifying you of any conditions that may result in hazards to yourself, persons nearby, and/or hazards to the vehicle will be presented in a text box with a black border and may include a signal word (see above). To the right is an example of a safety message.

The safety message may include additional warning icons representing the type of hazard. Below is a list of these icons and what they represent. These icons may also be included on the various warning and information decals applied to the vehicle.



This is an example of a safety alert message. This message will contain information about a hazard and/or instructions on avoiding a hazard. The actual size, location, and signal word used for the message box may vary.

Decals applied to the vehicle may have other icons representing their function. The icons and their definitions are listed below:



Safety alert symbol (see above).



High voltage hazard.



Explosion hazard.



Corrosive chemical hazard.



Fire hazard.



Poisonous chemical hazard.



Read the operators manual.



Read the maintenance manual.



Keep arms and legs inside the vehicle.



Parking brake ON.



Parking brake OFF.



Do not get wet.



Do not spray wash.

RESPONSIBILITIES

Of the Owner...

The owner of this or any Taylor-Dunn vehicle is responsible for the overall maintenance and repairs of the vehicle, as well as the training of operators.

The owner is responsible for operator training. Refer to Driver Training section for details.

The owner shall provide a copy of this manual if rented or loaned to another party and instruct the other party to read and understand the contents of this manual.

The owner shall provide a copy of this manual when and if the vehicle is transferred to another party.

Of the Operator...

All operators should complete an operator training course provided by the owner of the vehicle.

The operator is responsible for the proper use of the vehicle on authorized roads, highways, and approved installations only.

The operator is responsible for the safe operation of the vehicle, preoperational and operational checks on the vehicle, and the reporting of any problems to service and repair personnel.

Of the Service Personnel...

The service personnel are responsible for the service and maintenance of the vehicle. At no time should a service person allow any untrained personnel to service or repair this or any Taylor-Dunn vehicle. For the purposes of training, a qualified service person may oversee the repairs or services being made to a vehicle by an individual in training. At no time should an untrained individual be allowed to service or repair a vehicle without supervision. This manual is not a training guide.

WARNING

The only personnel authorized to repair, modify, or adjust any part of this or any Taylor-Dunn vehicle is a factory authorized service technician. Repairs made by unauthorized personnel may result in damage to the vehicles systems which could lead to an unsafe condition resulting in severe bodily injury and/or property damage. Unauthorized repairs may also void the vehicles warranty.

Personnel performing service and repair should have knowledge of:

- Basic standard automotive repair procedures
- Basic DC and AC electrical theory
- AC motor speed control operation
- Use of digital and analog multi-meters
- Lead acid batteries

Personnel performing maintenance should have basic knowledge of standard automotive maintenance procedures and lead acid batteries.

VEHICLE MODIFICATIONS

Taylor-Dunn vehicles are designed and manufactured in accordance with ANSI/ITSDF and OSHA regulations. Per ANSI/ITSDF and OHSA, modifications to the vehicle must be approved by the manufacturer. Listed below are the specific regulations:

ANSI/ITSDF 56.8-2006 Personnel and Burden Carriers

Paragraph 8.2q:

Modifications and additions which affect capacity and safe machine operation shall not be performed by the customer or user without manufacture's prior written authorization; where authorized modifications have been made, the user shall ensure that capacity, operation, warning, and maintenance instructions plates, tags, or decals are changed accordingly.

Paragraph 8.2r:

Care shall be taken to ensure that all replacement parts are interchangeable with the original parts and of a quality at least equal to that provided in the original equipment.

ANSI/ITSDF 56.9 – 2007 Safety Standard for Operator Controlled Industrial Tow Tractors

Paragraph 6.2.14:

Modifications and additions which affect capacity and safe tow tractor operation shall not be performed without manufacture's prior written approval. Capacity, operation, and maintenance instructions plates, tags, or decals are changed accordingly.

Code of Federal Regulations (CFR) Title 29, Subtitle B, Chapter XVII OSHA, Part 1910.178 Powered Industrial Trucks (2011)

1910.178(a)(4)

Modifications and additions which affect capacity and safe operation shall not be performed by the customer or user without manufacturers prior written approval. Capacity, operation, and maintenance instruction plates, tags, or decals shall be changed accordingly.

1910.178(q)(6)

Industrial trucks shall not be altered so that the relative positions of the various parts are different from what they were when originally received from the manufacturer, nor shall they be altered either by the addition of extra parts not provided by the manufacturer or by the elimination of any parts, except as provided in paragraph (q)(12) of this section. Additional counterweighting of fork trucks shall not be done unless approved by the truck manufacturer.

Motor Speed Control Programming

Taylor-Dunn programmable motor speed controls are programmed at the factory for optimum safe, efficient, and smooth operation of the vehicle. The program settings are based on many factors including but not limited to: Vehicle Model, Maximum Safe Speed, System Voltage, Drive Axle Configuration, Vehicle Configuration, etc.

Some of the parameters can be changed in the field Using PC software or handsets.

Contact the factory for information regarding available alternate program settings.

Taylor-Dunn will only authorize the use of settings obtained from the factory for a specific vehicle. Any other alterations to the programming ARE NOT AUTHORIZED and is at your own risk.

DO NOT interchange program settings from different vehicle models or models with different configurations.

WARNING

Improper programming may cause unexpected operation of the vehicle and/or damage the electrical components. This could result in severe bodily injury and/or property damage

REPLACEMENT PARTS

WARNING

To maintain peak performance, always use original Taylor-Dunn replacement parts intended for use on your vehicle. Taylor-Dunn components are designed and tested for use on specific Taylor-Dunn model vehicles. Only use the correct Taylor-Dunn replacement components for your Taylor-Dunn vehicle.

Do not modify your vehicle:

Modifications to this vehicle may have an undesirable affect on the operation of the vehicle, result in additional frame stress, or stress other components resulting in premature failure or an unsafe condition and may lead to an accident resulting in serious injury or death.

Using Non-OEM Replacement Components

To maintain peak performance, always use original Taylor-Dunn replacement parts intended for use on your vehicle.

Taylor-Dunn components are designed and tested for use on specific Taylor-Dunn model vehicles. Only use the correct Taylor-Dunn replacement components for your Taylor-Dunn vehicle.

Electrical Components

Electrical components not tested by Taylor-Dunn (or intended for use on other Taylor-Dunn vehicles) may have unanticipated interaction and/or interference with the vehicles control system resulting in unsafe vehicle operation or damage to the electrical system.

Mechanical Components

Mechanical components not tested by Taylor-Dunn (or from other model Taylor-Dunn vehicles) may have an undesirable affect on the operation of the vehicle, result in additional frame stress, or stress other components resulting in premature failure or an unsafe condition.

Due to the unknown properties of non-Taylor-Dunn tested components or from components not originally equipped on the vehicle, we cannot approve their use in a Taylor-Dunn vehicle.



About Your Vehicle

The purchase of your Taylor-Dunn vehicle shows a belief in high quality products manufactured in the USA. Your new vehicle operates entirely on electric battery power. It is an emissions free vehicle.

Taylor-Dunn, a leading manufacturer of electric burden and personnel carriers since 1949, wants to be sure this vehicle provides years of reliable service. Please continue to read this manual and enjoy this high quality Taylor-Dunn vehicle.

Each base model is available in numerous configurations depending on what options were requested when the vehicle was ordered.

WARNING

This vehicle does not provide protection from lightning, flying objects, or other storm related hazards. If caught in a storm, immediately seek shelter in accordance with local safety guidelines for your area. Not seeking shelter may result in severe personal injury.

Licensing Requirements

This vehicle **IS NOT** approved for licensed operation on public roads and highways. This model conforms to:

- American National Standards Institute Controlled Personnel and Burden Carriers ANSI B56.8.
- O.S.H.A. Standard Section 1910.178, Powered Industrial Trucks Type E

Vehicle compliance

This vehicle complies with one of the following designations: E, G, LP, or D. The vehicle identification tag lists the specific compliance designation. Operate this vehicle only in environments consistent with the compliance designation. Operation in other more hazardous environments can cause injury or death. Vehicles complying with more stringent designations are labeled as to the designation. Type EE compliance vehicles will have the EE¹ label applied.



Burden carriers


This vehicle is designed for operation in various applications including both indoor² and outdoor operation on paved, improved or groomed road surfaces. This vehicle should not be operated in off road areas such as a rocky environment, soft sand, or dirt roads with ruts or uneven road surfaces exceeding 4 inches.

- ¹ Vehicles approved for EE operation will have a special "EE" decal applied.
- ² Vehicles with internal combustion engines give off various fumes, gases, and soot while running, including carbon monoxide. Do not start or run the engine in a closed or poorly ventilated building where the exhaust gases can accumulate. Breathing these gases may result severe personal injury or death. LP fuel is recommended when operating indoors but does not negate the hazards listed above.

HOW TO IDENTIFY YOUR VEHICLE

Data Plate

To identify the model series of your vehicle, refer to the vehicle data plate.

**TAYLOR-DUNN**
Commercial and Industrial Vehicles Since 1948

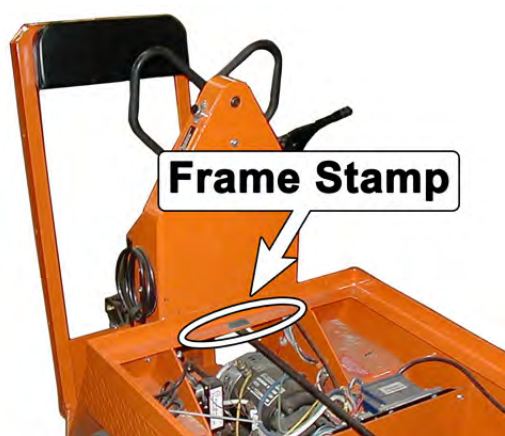
2314 West Ball Road
Anaheim, CA 92804-5417
USA • (714) 955-4040
www.taylor-dunn.com

MODEL NUMBER:			SERIAL NUMBER:				
MFG DATE:							
APPROX. WEIGHT			lb			kg	
DRAW BAR PULL							
NORMAL:			lb			N	
ULTIMATE:			lb			N	
LOAD CAPACITY:			lb			kg	
FUEL TYPE:							
BATTERY (FUEL TYPE E ONLY)			VOLTS:				
WEIGHT			MAXIMUM:			lb	kg
			MINIMUM:			lb	kg

CONFORMS TO TYPE VEHICLE PER OSHA STANDARD 1910.178
(POWERED INDUSTRIAL TRUCKS) AND ANSI B56
AT THE DATE OF MANUFACTURE

94-373-79

Where to Find Data Plate and Serial Number



ID tag on the main frame inside
the driver side wheel well.

Data plate on the kick panel



Taking Delivery of Your Vehicle

Inspect the vehicle immediately after delivery. Use the following guidelines to help identify any obvious problems:

- Examine the contents of all packages and accessories that may have come in separate packages along with the vehicle.
- Make sure everything listed on the packing slip is there.
- Check that all wire connections, battery cables, and other electrical connections are secure.
- Check battery cells to be sure they are filled.
- Check the tire pressure and tightness of the lug nuts
- Check for any signs of damage.

NOTICE

New front wheel bearing adjustment must be inspected after the first 24 hours of operation. This includes new vehicle installations. Failure to inspect the bearings after the break in period may result in premature failure of the bearings.

Check the operation of each of the following controls:

- | | |
|----------------------------|--------------------------|
| • Accelerator Pedal | • Reverse Warning Beeper |
| • Brake Pedal | • All lights |
| • Parking Brake | • Steering Wheel |
| • Key Switch | • Horn |
| • Direction Control Switch | |

WHAT TO DO IF A PROBLEM IS FOUND

If there is a problem or damage as a result of shipping, note the damage or problem on the bill of lading and file a claim with the freight carrier. The claim must be filed within 48 hours of receiving the vehicle and its accessories. Also, notify your dealer of the claim.

If there is any problem with the operation of the vehicle, **DO NOT OPERATE THE VEHICLE**. Immediately contact your dealer and report the problem. The report must be made within 24 hours of receiving the vehicle and its accessories.

The only personnel authorized to repair, modify, or adjust any part of this or any Taylor-Dunn vehicle is a factory authorized service technician.

WARNING

The only personnel authorized to repair, modify, or adjust any part of this or any Taylor-Dunn vehicle is a factory authorized service technician. Repairs made by unauthorized personnel may result in damage to the vehicles systems which could lead to an unsafe condition resulting in severe bodily injury and/or property damage. Unauthorized repairs may also void the vehicles warranty.

Driver Training

Per the following regulations, the owner of this vehicle shall conduct an Operator Training program for all those who will be operating this vehicle:

- ANSI/ITSDF 56.8-2006 Personnel and Burden Carriers: Part II, Paragraph 6.2a.
- ANSI/ITSDF 56.9 – 2007 Safety Standard for Operator Controlled Industrial Tow Tractors: Part II, paragraph 4.11.
- Code of Federal Regulations (CFR) Title 29, Subtitle B, Chapter XVII OSHA, Part 1910.178 Powered Industrial Trucks (2011): 1910.178, Section (I).
- Per OSHA Regulation, 29 CFR 1910.178 Powered Industrial Truck Operator Training, the owner must keep a record of conducted training and maintenance performed on the vehicle.

The training program shall not be condensed for those claiming to have previous vehicle operation experience. Successful completion of the Operator Training program shall be required for all personnel who operate this vehicle.

The Operator Training program shall include the following:

- Operation of this vehicle under circumstances normally associated with your particular environment.
- Emphasis on the safety of cargo and personnel.
- All safety rules contained within this manual.
- Proper operation of all vehicle controls.
- A vehicle operation and driving test.

Driver Qualifications

Only those who have successfully completed the Operator Training program are authorized to drive this vehicle. Operators must possess the visual, auditory, physical, and mental ability to safely operate this vehicle as specified in the American National Standards Institute Controlled Personnel and Burden Carriers ANSI B56.8.

The following are minimum requirements necessary to qualify as an operator of this vehicle:

- Demonstrate a working knowledge of each control.
- Understand all safety rules and guidelines as presented in this manual.
- Know how to properly load and unload cargo.
- Know how to properly park this vehicle.
- Recognize an improperly maintained vehicle.
- Demonstrate the ability to handle this vehicle in all conditions.

www.taylor-dunn.com



Vehicle Controls



1: Start Switch

The Start switch turns the vehicle electrical control system ON. This switch may or may not require a key to operate. Rotate the switch clockwise to turn the vehicle system "ON" and counterclockwise to turn the vehicle system "OFF". The vehicle will not run when in the OFF position.

The switch should be in the "OFF" position whenever the operator leaves the driver's seat.

This switch is designed to secure and disable the vehicle. The key can only be removed when the switch is in the "OFF" position.

2: Headlight Switch

Optional.

Push the top of the headlight switch to turn the lights on. Push the bottom of the switch to turn the lights off.

3: Strobe Light Switch

Optional.

Push the top of the switch to turn the strobe light on. Push the bottom of the switch to turn the light off.

4: Combination Display

The gauge on the dash has many functions. The display will cycle through the functions while the vehicle is in operation. Some functions may not be displayed depending on the current situation of the vehicle. More detail is provided on the following pages.

5: Directional Control Switch

This switch determines the direction of travel. The switch has three positions:

- **FORWARD:** Rotate the switch clockwise to travel forward.
- **REVERSE:** Rotate the switch counterclockwise to travel reverse.
- **OFF:** There is a center position between forward and reverse, this is the "direction" OFF position. The direction OFF position does **NOT** turn the vehicle control system OFF. Use the Start switch to turn the vehicle control system OFF. Refer to Start Switch in this section for details regarding turning the vehicle control system OFF.

Note: The OFF position IS NOT neutral and does NOT disconnect the motor from the drive train.

6: Hi-Low Speed Switch

Push on the bottom of the High/Low switch (turtle) for slow speed. Push on the top of the switch (rabbit) for normal speed.

Steering

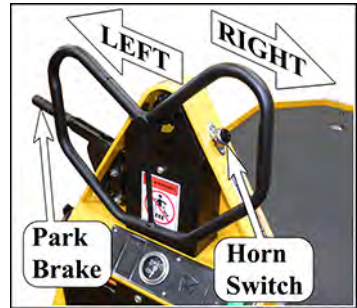
The steering wheel and steering system are similar to an automobile. To turn right, turn the steering wheel clockwise. To turn left, turn the steering wheel counter-clockwise.

Parking Brake

The park brake is the handle on the left side of the steering tower.

Pull the handle up until it locks to apply the brake. The treadle will not function when the brake is applied.

The handle should be pushed fully down during operation of the vehicle.



Operator Presence Switch

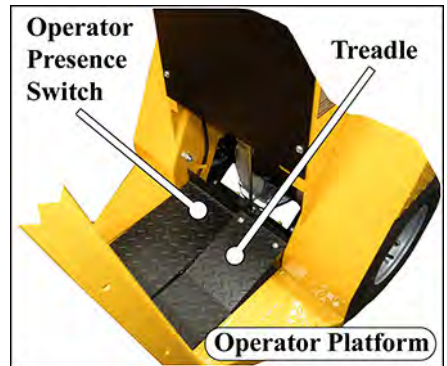
A switch located under the left side of the operator platform disables the power to the motor. Pressure must be maintained on the platform for the vehicle to operate. Whenever the driver leaves the vehicle, the driver should turn the key switch off, place the Direction Control switch in the center "OFF" position, and set the park brake.

Throttle/Brake Treadle

The treadle located on the right side of the floorboard positioned under the operator's right foot is both the brake and throttle.

Press the rear of the throttle pedal with your heel to apply the brake.

Press forward on the treadle to accelerate. The brake will be released when accelerating.



Combination Dash Display

Assuming there are no active faults detected (DTC's), on start up, the display will show the current battery charge status and total accumulated hours of operation. If there are active faults, then the display will scroll through all detected faults.

Note: Some single events will result in more than one DTC generated.

The following is an explanation of the different modes of the display depending on the current operating conditions.

Direction Indicator

The display will indicate direction selected for about 2 seconds after the direction is selected then switch to the BSI/Speed mode.

Forward Selected



DTC Code



DTC Message

Fault Messages (DTC)

This display will be in this mode any time the system detects a fault condition.

It will show the DTC (Diagnostic Trouble Code) as well as a brief description of the fault. IF there are multiple faults, the display will flash each fault for about 2 seconds.

Shown here is DTC F59 which is a type of SRO fault.

It will be in this mode until all fault conditions are resolved.

A code table is provided in the "Troubleshooting" section in this manual.

Battery Status / Hour Meter

This mode will be active only when the direction control switch is in the center OFF position.

At 15% charge remaining, the vehicle speed will be limited and "BDI CUT" will be displayed.

Battery Status



Hour Meter

Speed



BSI / Speed

This is the mode shown during operation of the vehicle.

Note: The speed is software selectable for MPH or KPH and can be changed by your dealer.

Vehicle Operation

General Safety Guidelines

WARNING

Your ability to operate a motor vehicle can be seriously impaired with blood alcohol levels far below the legal minimum.

If you have been drinking alcohol, don't drive. Ride with a designated non-drinking driver, call a cab, or use public transportation.



WARNING

The advanced technology built into the vehicle motor control has many systems to monitor the condition and operation of the vehicle to maintain safe operation.

Even with advanced technology, it is not possible to change the laws of physics. Improper driving technique for the current conditions could result in loss of vehicle control.

WARNING

When leaving the approved operating position ALWAYS:

- 1) Firmly set the park brake.
- 2) Place the direction control switch in the center OFF position.
- 3) Turn the start switch OFF and remove the key.

Failure to perform these operations may result in unexpected vehicle movement causing severe bodily injury and/or property damage.

- Only qualified and trained operators with no physical, mental, or sensory disabilities may operate this vehicle or any of its components.
- No passengers are allowed to be transported in the cargo area of the vehicle.
- No occupants other than the operator are allowed on this vehicle.
- Before operating this vehicle, perform all Daily and Pre-operation checks as defined in the Vehicle Maintenance section.
- Confirm proper operation of all vehicle controls before operating the vehicle.
- Wear closed toe low heel shoes when operating the vehicle.
- No reckless driving.
- Do not operate a motor vehicle while under the influence of alcohol or any drug that may impair your ability to drive.
- Keep all body parts (head, arms, legs) inside this vehicle while it is moving.
- The operator shall remain on the operator platform in the approved operator position while the vehicle is in motion.
- Do not exit the vehicle until the vehicle has come to a complete stop.
- If equipped with a ladder, the ladders shall not be occupied while the vehicle is in motion.
- Do not transport small children. This vehicle is not designed to accommodate child seats.
- Do not leave children unattended in the vehicle.
- Keep a clear view ahead at all times.
- Keep the vehicle under control at all times.
- Observe all traffic regulations and speed limits.

- The vehicle shall be equipped with head and tail lights if operated at night.
- This vehicle may overturn if turned sharply when driven at high speeds.
- Drive slowly when making a turn, especially if the ground is wet or when driving on an incline.
- Yield right of way to pedestrians, ambulances, fire trucks, or other emergency vehicles.
- Sound your horn when approaching pedestrians. DO NOT assume the pedestrian is aware of your presence; before passing, slow down and allow sufficient clearance between the vehicle and pedestrian.
- Do not overtake another vehicle at intersections, blind spots, narrow isles, or other dangerous locations.
- Stop and sound horn at all intersections regardless if it is posted with a stop sign.
- Do not operate this vehicle in areas at risk to falling objects.
- Do not drive over loose objects, holes, or bumps.
- If NOT equipped with a ladder; Do not drive under any object that is less than 85 inches (216 cm) from the ground.
- If equipped with a ladder; Do not drive under any object that is within 5 inches (12 cm) of the top of the ladder.
- Do not drive off of curbs or other steep drop-offs more than 1 inch high.
- Stay in your driving lane under normal conditions, maintaining a safe following distance from other vehicles.
- Driving through water or mud may affect brake performance. ALWAYS test brakes after driving through water or mud.

Collisions or Accidents

A collision or accident may damage the electrical circuits or batteries resulting in a fire hazard or chemical spill. In the event of a collision or accident, immediately turn the Start switch OFF, set the park brake, then exit the vehicle.

Call emergency personnel if there is any indication of smoke, burning smell, electrical arcing, or leaking fluid.

Tip Over

In the event of a tip over, quickly move away from the vehicle while avoiding the steering tower, seat back, and optional ladder.

Starting

Before operating this vehicle: Refer to General Safety Guidelines at the beginning of this chapter.

Note: This vehicle is equipped with a charger interlock which is designed to disable the vehicle from being driven while the AC charger cord is plugged into a functioning power source.

Note: This vehicle is equipped with an operator presence switch under the left floorboard. The system will be disabled unless the driver is in the approved operator position.

WARNING

The operator presence switch is only one part of the vehicle safety system. The switch should not be relied upon as the only safety feature used to disable or disengage this vehicle. Do not bypass or in any way disable the switch. Doing so could result in unexpected movement of the vehicle causing severe bodily injury and/or property damage.

1. Stand in the approved operator position and press back on the treadle.
2. Release the park brake.
3. Place the Direction Control switch in the center OFF position.
4. Place the Start switch on the ON position and wait 1 second.
5. Select a direction of travel.
6. Slowly press the front of the treadle to accelerate to the desired speed.

WARNING

NO PASSENGERS are to be transported on this vehicle. Operator ONLY in the approved operator position.

Note: In an emergency, the Start switch may be turned OFF to disable the motor speed control.

Refer to the Driving section for additional information in the operation of your vehicle.

WARNING

DO NOT exceed the maximum rated speed for your vehicle, locally imposed speed limits, or the safe operating speed for conditions. Exceeding any of these speed limits will increase the likelihood of an accident causing personal injury. In addition, exceeding the maximum rated speed for your vehicle may result in damage to the vehicle drive train and/or control system.

Driving

Before operating this vehicle:

- Perform all daily and pre-operation checks as defined in the Vehicle Maintenance section.
- Refer to General Safety Guidelines at the beginning of this section.

! WARNING

DO NOT exceed the maximum rated speed for your vehicle, locally imposed speed limits, or the safe operating speed for conditions. Exceeding any of these speed limits will increase the likelihood of an accident causing personal injury. In addition, exceeding the maximum rated speed for your vehicle may result in damage to the vehicle drive train and/or control system.

Selecting Direction of Travel

The direction of travel is selected with the Direction Control switch. The direction of travel must be selected **after** the Start switch is turned ON. If a direction is selected before the Start switch is turned ON, then a sequence fault will occur. If the sequence fault occurs, you can clear the fault by placing the Direction Control switch in the center OFF position and then re-selecting the desired direction of travel.

Your vehicle may be equipped with a reverse or motion beeper.

- The motion beeper will sound in forward and reverse
- The reverse beeper will only sound when the reverse direction is selected.

Changing Direction of Travel

The direction selected by the Direction Control switch can be changed at any time. If the vehicle is in motion when the direction is changed, the motor control system will reverse the current flow in the motor slowing the vehicle to a stop and then continue in the new direction selected.

Driving in Forward

1. Turn the start switch ON, then select FORWARD using the Direction Control switch.
2. Slowly press the front of the treadle to accelerate to the desired speed.

Note: This vehicle is equipped with an operator presence switch under the left floorboard. The system will be disabled unless the driver is in the approved operator position. The operator presence switch must be activated before a direction is selected.

Driving in Reverse

1. Check and confirm that there are no obstacles behind the vehicle before backing up.
2. Turn the start switch ON, then select REVERSE using the Direction Control switch.
3. Slowly press the front of the treadle to accelerate to the desired speed.

Note: The maximum reverse speed will be slower than the forward speed.

Stopping

Press the rear of the treadle with your heel to apply the brake. The amount of force required to stop the vehicle will vary depending on the environment and load on the vehicle.

This vehicle is equipped with regenerative (regen) braking. Regen braking uses the stored energy of the moving vehicle to generate electricity. The generation of electricity slows the vehicle down and the power generated is put back into the batteries increasing the driving time of your vehicle. Do not turn the start switch off until the vehicle has come to a complete stop. Turning the start switch off will disable the regen braking.

There is more than one regenerative braking mode. The mode activated depends on the driving conditions as follows:

- While Coasting: When you release the treadle, the Neutral Regen mode is activated and gradually slows the vehicle. Only a small amount of power is generated.
- Changing Direction: The Direction Regen mode is activated when the direction of the vehicle is changed while the vehicle is in motion. In this mode the motor is reversed and slows the vehicle to a stop and then continues in the opposite direction.

Parking

1. Bring the vehicle to a stop at an authorized parking space.
2. Place the Direction Control switch in the center OFF position.
3. Turn the start switch OFF.
4. Set the park brake.
5. Remove the key from the Start switch. The driver should keep the key in his/her possession.

Note: If parking this vehicle on an incline, turn the wheels to the curb, or block the wheels.

Loading Cargo

WARNING

DO NOT transport or load cargo on the operator platform. Cargo placed on the operator platform area may interfere with the operation of the vehicle causing loss of control of the vehicle and result in a collision or accident with severe injury.

- Before loading or unloading cargo:
 1. Place the Direction Control switch in the center OFF position.
 2. Turn the start switch OFF
 3. Set the park brake.
- Do not transport cargo that is wider than the vehicle.
- Do not load cargo in the passenger compartments.
- Use only Taylor-Dunn approved cargo accessories.
- Do not exceed the load capacity of the vehicle.
- The standard designated cargo area is the front deck. Only load cargo on the deck unless the vehicle has been equipped with Taylor-Dunn approved alternative cargo storage areas.
- Cargo shall only be transported in the designated cargo area of the vehicle and evenly distributed with the center of gravity close to the center of the designated cargo area.
- All cargo shall be secured to prevent falling from the vehicle or shifting position while the vehicle is in motion.
- Our deck enclosures and cargo boxes, and similar structures are not designed to carry cargo or accessories unless equipped from the factory. Mounting additional weight on these structures may result in sudden failure of the cover and/or cover supports causing severe personal injury.
- Cargo consisting of fluid in tanks shall have fluid baffles in the tank to help reduce sloshing and shifting load weight.

WARNING

DO NOT transport passengers in the cargo area. All passengers must be seated in the available seats, one passenger per seating position.

Vehicle Load Capacity, Definition

The rated maximum load capacity of a vehicle is the load carrying capacity of the **standard** model. The maximum load is on the vehicle's data plate.

Occupants and optional equipment added to the vehicle at time of manufacture or installed after delivery by the dealer or user reduces the capacity.

Example: Standard Load Capacity = 1,000 pounds:

1,000 - Driver (200) - Cargo Box (200) = 600 pounds maximum load on deck.

The definition of maximum load is the maximum weight than can be carried on a vehicle under ideal conditions. There are many conditions that will reduce the maximum safe load a vehicle can carry.

Some of these conditions are, but not limited to:

- Uneven road surface.
- Liquid loads (sloshing).
- Tall loads.
- Traveling up or down grades.
- Wide loads.
- Traveling across grades.
- Long loads.

The rated capacity assumes the load has a low center of gravity and is centered on the deck. As example: A 20 foot tall, 1,000 pound statue on the deck of a 1,000 pound capacity vehicle is not approved.

Liquid loads sloshing around in a tank will shift the center of gravity and may result in stability and braking issues. Liquid loads must be secured and have fluid baffles in the tank to help reduce shifting load weight due to sloshing.

Transporting Pets

Pets should only be transported in a pet carrier that is securely tied down on the cargo deck.

Using the Ladder (optional)

Maximum ladder capacity: 300 pounds (136 kg).

1. Stop the vehicle on a level surface.
2. Set the Direction Control switch to the "OFF" (center) position.
3. Set the parking brake.
4. Turn the start switch to the "OFF" position and remove the key.



- If the ladder is struck by any object immediately remove the vehicle from service. Inspect and repair as needed.
- Only climb the ladder from platform side.
- Always face the ladder.
- Use the ladder handrails.
- Keep both feet on the ladder step when picking cargo.
- Do not use the ladder unless you are in good physical condition without any impairment.
- Do not operate the vehicle while the ladder is occupied.
- Do not climb higher than the top step.
- Do not step on the seat back cushion.
- Do not ascend or descend the ladder while holding cargo that requires both hands.
- Do not carry large cargo that may result in loss of balance.
- Do not use the ladder to climb onto any object, platform, or other vehicle.
- Do not overreach, keep your waist within the ladder rails.

⚠ WARNING

DO NOT use the ladder if the vehicle is parked on a grade.

Using the ladder while on a grade will increase the risk of vehicle tipping over and/or falling off the ladder resulting in property damage and/or severe personal injury.



TOWING

WARNING

Use caution when towing trailers wider than the vehicle allowing for additional isle clearance and corner cutting of the trailers.

Not allowing for additional clearance may result in collision with severe bodily injury and/or property damage.

Towing a Trailer

Note: Towing up or down grades will significantly reduce the capacity of the vehicle.

When towing trailers:

- Do not exceed the DBP towing capacity of the vehicle. See Specifications and DBP definition.
- Only use Taylor-Dunn approved trailer hitches.
- Do not exceed the capacity of the trailer hitch installed on the vehicle.
- Do not exceed the load capacity of the trailer. Refer to documentation supplied with your trailer for information regarding load capacity of the trailer.
- Make sure all loads are securely tied down. Refer to documentation supplied with your trailer for information regarding attaching loads to the trailer.
- Cargo consisting of fluid in tanks shall have fluid baffles in the tank to help reduce shifting load weight.
- Do not back up when towing more than one trailer.
- Drive slowly when towing loads with a high center of gravity.
- When turning, be sure to allow for "corner cutting" of the trailer.
- Allow for longer stopping distances when towing heavy loads.
- Allow for longer stopping distances when driving down a grade.
- Block the trailer wheels before disconnecting from the vehicle.
- Do not disconnect a trailer while parked on a grade.

Draw Bar Pull (DBP), Definition

DBP is a measure of pulling force required to move a load. The load may be a trailing load or a pushed load. It is normally expressed in pounds or Newtons.

The DBP is the horizontal force exerted on a load at its coupler while towing or pushing a load. To measure the DBP, a scale would be connected in line with the towing vehicle coupler and the load. The scale will directly read the DBP as the load is towed.

DBP specifications, definition:

- Normal DBP: Highest DBP that can be sustained for a given duty cycle.
- Ultimate DBP: Also referred to a Maximum DBP. Highest DBP achieved while traveling at a minimum speed of approximately 0.5 mph (0.8 kph) for a minimum of 30 seconds. This specification is used in calculations for getting a load moving.

Notes:

DBP specifications are based on:

- Road surface consisting of level dry clean asphalt, brushed concrete or equivalent.
- Maximum battery weight installed per vehicle battery specification.

Towing a load up any grade will significantly increase the DBP required.

Most paved roads and parking lots have a drainage grade to allow water to run off. When operating a tow tractor at or near its maximum capacity, this drainage grade will significantly affect DBP required to pull the load and may result in exceeding the specifications.

The load capacity and towing capacity of a burden carrier cannot be combined. The towing capacity is reduced as weight is added to the burden carrier. This weight includes the passengers and optional equipment as well as the load on the deck.

The formula for calculating reduced towing capacity DBP is:

Reduced DBP = DBP - VI * (DBP/Vc) where:

- Vc = Vehicle Rated Capacity
- DBP = Normal Draw Bar Pull specification
- VI = Vehicle Load (includes passengers and options)

The weight that the vehicle can pull can be calculated based on the DBP. This capacity would be for a single standard 4-wheel trailer with a front steer axle and includes the weight of the trailer.

- Level Surface: Towed Weight = DBP * 50
- Up a grade: Towed Weight = DBP / (2 + %g) * 100 where %g = the percent of grade

Hitch Release

WARNING

Do not operate the hitch release lever while on a grade or while the vehicle is in motion.

- **Decoupling a trailer while in motion may result in unexpected movement of the vehicle and/or loss of control of the trailer.**
- **Decoupling a trailer while on a grade will result in loss of control of the trailer.**

The above actions may result in severe personal injury and/or property damage.

Towing the Vehicle

Note: If at all possible, this vehicle should be placed on a carrier, rather than towing.

⚠ WARNING

DO NOT tow a vehicle with a tow strap if the vehicle brakes are not working properly. Using a strap to tow a vehicle with no brakes may result in loss of control of both vehicles causing severe bodily injury and/or property damage.

⚠ WARNING

DO NOT tow the vehicle faster than 5 mph (8 kph) or its maximum designed speed, whichever is lower.

Towing the vehicle faster than 5 mph may result in one or more of the following:

- Loss of control of both vehicles causing severe bodily injury and/or property damage.
- Damage to the towed vehicle drive train components and/or motor.

⚠ WARNING

Use extreme caution if towing a vehicle backwards and recommended **ONLY** to tow a short distance until able to connect to the front tow bar and tow forwards.

If towed backwards, the towed vehicle may swing wide turning turns resulting in loss of control of both vehicles causing severe bodily injury and/or property damage

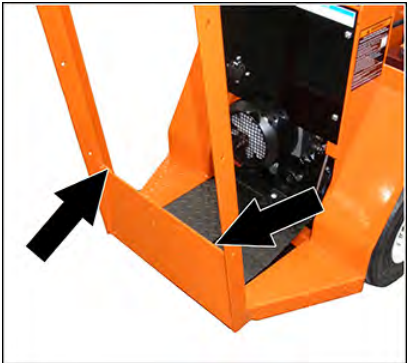
1. Attach a tow strap to the front bumper tow-bar.
2. Turn the start switch off and place the direction control switch in the center off position.
3. Use another driver to steer this vehicle while it is being towed. Be sure the driver uses the brakes when the towing vehicle slows or stops.



VEHICLE TIE DOWN POINTS



Front Tie Down Points



Rear Tie Down



Charging Your Vehicle

GENERIC SAFETY GUIDELINES

DANGER

The charger must be connected to a properly grounded AC receptacle. Improper connection will increase the risk of electric shock and can cause severe personal injury or death.

WARNING

- Explosive mixtures of Hydrogen gas are present within battery cells at all times. Do not work with or charge a battery in an area where open flames (including gas furnace or water heater pilots), sparks, cigarettes, or any other sources of combustion are present. Always provide ample ventilation in rooms where batteries are being charged. Failure to do so may result in severe bodily injury and/or property damage.
- DO NOT disassemble the charger. There are no user serviceable components in the charger. Refer all repairs to a qualified technician. Incorrect repair or reassembly of the charger can result in an explosion, electric shock, or fire.
- Use of extension cords is not recommended. Improper use of an extension cord may result in fire.
- The Signet, Lester, and Delta-Q chargers are for lead acid batteries only. Charging other types of batteries may cause the battery to burst or explode causing severe personal injury and/or property damage.
- Do not attempt to operate the vehicle while charging the battery. Operating the charger and vehicle at the same time may lead to damage to the charger and/or the vehicle resulting in personal injury and/or property damage.
- This charger requires a standard household 15 Amp electrical circuit. Before plugging the charger in, confirm that your charging station is configured correctly. DO NOT attempt to charge two vehicles on one standard household 15A circuit. Failure to confirm the proper charging station configuration or attempting to charge two vehicles may result in fire.
- Do not charge any battery that is, or is suspected to be frozen. Charging a frozen battery may result in explosive rupturing of the case due to a build up of internal pressure. This may causing severe bodily injury and will cause property damage.
- The charger should not be used by children or any personnel with mental or sensory disabilities. Incorrect usage due to inability to understand operation may cause severe personal injury and/or property damage.

NOTICE

The Start switch must be in the “OFF” position when charging the batteries. Failure to turn the Start switch “OFF” may result in damage to the vehicle’s electrical system.

NOTICE

Check battery electrolyte before charging. Do not charge batteries with low electrolyte level. Charging with low electrolyte level will result in premature failure of the battery.

NOTICE

The charger originally supplied with the vehicle is for use with the batteries originally supplied with the vehicle. If installing a different charger or batteries, consult the charger and/or battery manufacturer to confirm that the charger used is compatible with the batteries. Use of an incorrect charger will result in damage and premature failure of the batteries.

Charging Time

Average charging time is typically 8 to 10 hours. The time required to fully charge your batteries will vary depending on:

- Capacity of the batteries: Higher capacity battery requires longer charge time.
- Output of the charger: Higher charger output requires less charge time.
- Depth of discharge: The deeper a battery is discharged, the longer it takes to charge.
- Temperature: Low temperatures require longer charge time.

It is not unusual for charge times to exceed 15-hours, especially with new batteries.

To Obtain the Maximum Battery Life

Charge the battery only after it reaches a normal discharge (20%) as indicated on the Battery Status Indicator (BSI). Failure to follow this guideline could result in the battery entering an overcharge state, which will reduce the life of the battery. If you find it necessary to charge the battery before it is completely discharged, we recommend waiting until it is discharged a minimum of 30% to reduce the possibility of overcharging. Refer to Vehicle Controls in this section for information on how to read the BSI.

Do not discharge the battery beyond a normal discharge as indicated on the BSI. Discharging your battery too deep will result in premature failure of the battery. Refer to Vehicle Controls in this section for information on how to read the BSI.

Check the battery electrolyte level once a week. Do not charge the battery if the battery electrolyte is low. Charging when the electrolyte is low will damage the batteries and shorten the life-span of the battery. Only authorized personnel should perform battery maintenance including maintaining the battery electrolyte level. Refer to the Battery Maintenance Section for battery maintenance information.

It is not recommended to interrupt the charging cycle. Allow the charger to turn off before disconnecting the AC plug. Interrupting the charging cycle could lead to overcharging or discharging the batteries too deep. Both circumstances will result in premature failure of the battery.

New Battery Break In

New batteries require a break in period of up to 40-cycles. The batteries will not have their full capacity during this break in period and may result in longer charging times.

AC Power Source

The AC power source required by the charger will vary depending on the charger installed in the vehicle. Refer to the specifications printed on the charger for details.

Use of extension cords is not recommended. If you find it necessary to use an extension cord, make sure the extension cord power rating exceeds the power requirements of the charger.

The United States Federal, State or local regulations may require the use of a Ground Fault Interrupter (GFI) cable or AC outlet equipped with a GFI for charging your vehicle. A charger cord with an integral GFI is available through your Taylor-Dunn dealer.

WARNING

Use of extension cords is not recommended. Improper use of an extension cord may result in fire.

Lester Summit II Charger

Description of Operation

The Summit II charger is designed as an automatic charger. It is available with charging profiles for SLA and FLA batteries. Refer to the factory specifications on the charger for the type of battery it was configured for when manufactured. Use of different batteries not listed may result in premature failure of the batteries.



The charger turns itself on when it is plugged into the wall outlet and turns off when the batteries are fully charged. The charger continues to monitor the battery voltage and if the battery voltage drops below a threshold value, then the charger will turn on again for a short cycle to keep the batteries topped off.

There are three lamps on the charger used to indicate the active charging status and if any faults occurred during the charging cycle.

The charger features Bluetooth® wireless communication, which enables a smart phone or tablet running the ChargerConnect™ app to be used to:

- View the real-time charge cycle status
- Download charge cycle history records from the charger
- Upload charge cycle history records to the Cloud for access anywhere in the world
- Select the active battery profile
- Download new battery profiles from the Cloud
- Upload battery profiles to the charger

Detailed operating instructions and the ChargerConnect™ app can be downloaded from the Lester Electrical web site. <http://www.lesterelectrical.com>

Instructions for using the ChargerConnect™ app are also available on the Lester web site.

The charger data plate includes a label with the Factory Specifications programed in the charger at time of manufacture. If the program settings are changed then a new label should be applied with the specifications. Replacement labels are not available from the factory.



Charging, Summit II Charger



Refer to grouped safety warnings and information at the start of this chapter.

Note: Battery pack voltage must exceed 10 volts for the charger to start.

This charger requires a standard household electrical circuit rated at minimum of 15 Amps. Consult an authorized electrician if you do not know the configuration of your circuits.

1. Park the vehicle at an authorized charging station. Refer to Parking in the Driving section.
2. Connect the charging cord to the AC power receptacle.
3. The charger will start the charging cycle after it has determined that all systems are OK. This will be indicated by the Status lamp flashing slowly ($\approx 1/\text{second}$).

Note: It is recommended that the charging cycle be allowed to complete normally before disconnecting the power cord.

Note: The charger will wait 1 minute before starting if the plug is removed and reconnected.

The Charge Status lamp (yellow) will indicate the active charging phase as follows:

- **Slow flash:** Charge cycle is ON and is in constant current mode.
- **Rapid flash:** Charge cycle is ON and is in constant voltage mode.
- **Solid:** Charge cycle is in finish mode.

The Charge Complete lamp (green) will indicate the charging status as follows:

- **Slow flash:** Charge cycle is complete and is in post charging phase.
- **Rapid flash:** Normal cycle is complete and now in equalizing phase.
- **Solid:** Charge cycle is complete.

All 3 status lamps will be ON solid when the charge cycle is started and the charger is in the boot up phase.

All 3 status lights will flash slowly when Bluetooth device is connected.

The FAULT lamp will turn ON solid or flash only if an abnormal charging condition has occurred. All three lamps are used to indicate a fault condition. Refer to the following fault code table for more information.

Fault lamp	Status lamp	Complete lamp	Fault Description
Slow flash	OFF	ON	Charger overheated
Slow flash	Fast flash	Slow flash	Unable to start due to temperature below -25°C . Cycle will start when temperature rises
Slow flash	ON	OFF	Battery voltage below 10 volts
Slow flash	OFF	OFF	AC power interrupted. This fault will only display for 1 minute and then clear.
Slow flash	ON	Slow flash	Charger internal fault
Slow flash	Slow flash	OFF	Charger internal fault
Slow flash	Slow flash	ON	Charger internal fault
Fast flash	-	-	Charger internal fault

The following conditions are an indication of battery problems

ON	OFF	OFF	Time out: One or more charging phases exceeded a time limit
ON	OFF	Slow flash	Battery voltage exceeded threshold indicating one or more faulty batteries
ON	OFF	ON	Battery voltage too low indicating one or more faulty batteries
ON	Slow flash	OFF	Time out: Possible too large AH battery installed.
ON	Slow flash	Slow flash	Time out: Total charging time exceeded a time limit indicating one or more faulty batteries

Troubleshooting

This is a summary troubleshooting guide to determine possible cause and resolution of operator correctable issues.

This is not an all inclusive guide and does not include repair items to performed by a qualified technician.



WARNING

The only personnel authorized to repair, modify, or adjust any part of this or any Taylor-Dunn vehicle is a factory authorized service technician. Repairs made by unauthorized personnel may result in damage to the vehicles systems which could lead to an unsafe condition resulting in severe bodily injury and/or property damage. Unauthorized repairs may also void the vehicles warranty.

Not Running

- If the dash display is off:
 - Confirm the start switch is turned to the run position.
 - Confirm all emergency stop switches are in the run position.
 - Confirm the battery connector is properly engaged.
- If problem not corrected, then refer repair to a qualified technician.
- If the dash display is on:
 - Confirm charger is not plugged in.
 - Confirm there is no debris under the left floorboard on the operator platform.
 - Confirm battery has sufficient charge.
- If problem not corrected, then refer repair to a qualified technician.

Running Slow

- Confirm battery is charged.
- Confirm High/Low speed switch is in the normal speed (rabbit) position.
- If problem not corrected, then refer repair to a qualified technician.

Runs Only in One Direction

- Refer repair to a qualified technician.

Hard to Steer

- Confirm start switch is in run position.
- Refer repair to a qualified technician.

DIAGNOSTIC TROUBLE CODES (DTC)

Only shown are the DTC's (faults) caused by the operator or correctable by the operator.

There are many other codes: Codes not listed here cannot be corrected by the operator and must be referred to a qualified technician.

DTC Code	Cause	Resolution
12	Overloaded	Reduce load on vehicle
16	Control overheated	Allow controller to cool
17	Battery low (severe)	Charge battery
18	High Battery Voltage	Possible due to coasting down grade with full battery charge. Use brakes to control speed down hill.
21	Too Cold	Operating with temperatures below -25°C result in power cutback
22	Overheating	Reduce load
23	Battery low	Charge battery
24	High Battery Voltage	Possible due to coasting down grade with full battery charge. Use brakes to control speed down hill.
28	Motor overheating	Reduce load
47	Operator sequence error	Operate switches in correct order
51	Throttle and Brake pedals pressed at same time	Release brake pedal
52	<ul style="list-style-type: none"> Battery door off OPS not engaged 	<ul style="list-style-type: none"> Confirm battery doors properly installed Stand in approved operator position
54	Maintenance due soon	Have vehicle serviced
55	Maintenance due now	Have vehicle serviced
58	Throttle pressed before direction selected	Operate switches in correct order
59	Throttle pressed before OPS closed	Operate switches in correct order
64	Charger connected	Disconnect the charger
73	Motor stalled	Reduce load

Storing and Returning to Service

Both storing your vehicle and returning it to service should only be performed by authorized personnel.

Storing Your Vehicle

- Clean the batteries, then fill and charge before putting the vehicle in storage. Do not store batteries in a discharged condition.
- Lube all grease fittings.
- Clean, dry, and check all exposed electrical connections.
- Inflate the tires to proper pressure (if applicable).
- For extended storage, the vehicle should be elevated so that the tires are not touching the ground.

NOTICE

Storing batteries that are discharged or allowing stored batteries to discharge while in storage cause sulphation of the battery plates. This will result in reduced capacity and premature failure of the batteries.

If stored for a prolonged period, the batteries should be charged as follows:

Storage Temperature (F)	Charging Interval (months)
Over 60	1
Between 40 and 60	2
Below 40	6

Returning to Service

- Check the battery state of charge and charge if required.
- Perform all applicable maintenance checks in the Maintenance Schedule.
- Remove any blocks from the vehicle and/or place the vehicle down on to the ground.
- Test drive before putting into normal service.



Vehicle Maintenance

Daily Inspection

The following items should be inspected once every day before the vehicle is put into service:

- External frame damage (body).
- Operation of all lights, warning alarms.
- Inspect for leaking fluids or grease.
- Tire tread or sidewall damage.
- Smooth and proper operation of all controls such as but not limited to:
 - Treadle
 - Steering
 - Horn
 - Parking brake
 - Etc.
- Proper operation of all locking devices such as but not limited to:
 - Tool box
 - Removable battery trays
 - Cargo box
 - Etc.
- Proper operation of all interlocking switches such as but not limited to:
 - Start switch
 - Operator presence switch
 - Charger interlock switch
 - Etc.

Pre-Operation Inspection

The following items should be inspected every time before the vehicle is driven:

- Steering operation.
- Brake operation (service and park brake).
- Tire pressure (visual inspection only).



Remove cargo before raising the vehicle, raising or removing the deckboard, or servicing the vehicle. Failure to remove the cargo may result in cargo falling from the vehicle causing severe personal injury and/or property damage.

INTERLOCK SWITCH INSPECTION

The interlock switches should disable vehicle operation when activated. Perform the following to confirm proper operation. If any one test fails, then immediately remove the vehicle from service and refer repair to a qualified technician.



WARNING

These procedures may result in unexpected vehicle movement.

- All procedures shall be performed in an area that allows for possible movement of the vehicle and room to safely stop the vehicle if it moves.
- DO NOT allow any personnel to stand in front or behind the vehicle while performing these procedures.

Failure to follow the above instructions may result in severe personal injury and/or property damage.

DO NOT bypass, modify, or disable any interlock switch. Doing so could result in unexpected movement of the vehicle causing severe bodily injury and/or property damage.

All procedures are done with the charger disconnected from its power source except for the procedure testing the charger interlock. If using a portable charger, disconnect the charger cable from the vehicle.

Start Switch

Turn the Start switch OFF.

Stand in the approved operator position, select a direction, then slowly press the treadle.

- The vehicle should not operate.

Release the treadle and place the direction control switch in the center OFF position.

Turn the start switch ON, select a direction and slowly press the treadle.

- The vehicle should operate normally.

Operator Presence Switch

Stand in the operator position, turn the start switch ON, select a direction, and slowly press the treadle forward.

- The vehicle should operate normally.

Release the treadle, lift your foot up off the left side floorboard and again slowly press the treadle.

- The vehicle should not operate.

Charger Interlock Switch

Connect the charger to its power source. If using a portable charger, connect the charger cable to the vehicle.

Stand in the approved operator position, turn the start switch ON, select a direction, and slowly press the treadle.

- The vehicle should not operate.

Disconnect the charger and wait 1 minute.

Stand in the operator position, turn the start switch ON, select a direction, and slowly press the treadle.

- The vehicle should operate normally.

Maintenance Schedule

Most of these items should only be performed by a qualified technician. Details regarding the service procedures can be found in the vehicle service manual.

Any problems found during an inspection should be repaired before the vehicle is put back into service.

Maintenance Guidelines for Severe Duty Applications

The above maintenance schedule is based on the average typical application. If the vehicle is operated under "severe conditions", service procedures should be conducted more frequently than specified. The frequency of service under severe conditions is determined by the use of the vehicle. The owner/operator must evaluate the operating environment to determine the increase in maintenance frequency.

In addition, the entire vehicle should be inspected monthly for signs of damage.

The following list is meant as a guide and is not all-inclusive of a "severe duty" application.

- Operation in excess of 100 hours per month.
- Extreme temperature.
- Bumpy, dusty, or ill maintained roads.
- Excessively wet areas.
- Corrosive or contaminated areas.
- Frequent loading of the vehicle at/near capacity.

Every Week

- All daily items plus the following:
 - Battery electrolyte level
 - Check tire tread for debris
 - Inspect tire wear or damage
 - Check tire pressure
 - Check all electrical interlocks for proper operation
 - Smooth and proper operation of treadle
 - Operation of horn
 - Operation of lights
 - Operation of parking brake
 - Operation of steering
 - Operation of operator presence switch
 - Re-torque wheel nuts. First 20 hours then every 300 hours
 - Inspect for fluid leaks

First 20 hours

- Re-torque the wheel nuts.

Every Month or 100 hours

- All weekly items plus the following:
 - Inspect for existence and readability of all safety labels
 - Clean battery terminals
 - Inspect front wheel bearings for play and noise
 - Inspect steering chains and pillow blocks
 - Inspect steering wheel retaining clip
 - Trailer hitch (operation, latch, wear)
 - Clean motor control panel
 - Clean exterior of drive motor
 - Clean charger cooling fins or vents
 - Inspect fork collar bearings

Every 3 Months or 300 Hours

- All monthly items plus the following:
 - Inspect/adjust brakes (parking and service)
 - Clean battery compartment
 - Inspect and tighten all hardware (first 300 hours only, then 1200 hours and every 1200 hours)
 - Lubricate the vehicle
 - Re-torque wheel nuts
 - Clean and lubricate motor coupler
 - Tighten all electrical connections

Every 6 Months or 600 hours

- All quarterly items plus the following:
 - Inspect all electrical connections for signs of overheating
 - Inspect fork and steering shaft gears
 - Inspect all wiring for cracks, fraying or wear
 - Inspect frame for damage
 - Test batteries

Every Year or 1,000 hours)

- All 6 month items plus the following:
 - Replace treadle return spring
 - Inspect and tighten all hardware
 - Align front fork
 - Inspect brakes
 - Rotate tires
 - Inspect rear wheel bearings for noise

Every 2 Years or 2,000 hours

- All yearly items plus the following:
 - Change rear axle oil
 - Clean and repack front wheel bearings, replace grease seals



BATTERY MAINTENANCE

WARNING

High Voltage is present in the battery compartment. **DO NOT** touch the battery terminals during servicing of the battery as this may result in severe electric shock and/or death.

DANGER



- Battery electrolyte is poisonous and corrosive. It contains sulfuric acid. Avoid contact with skin, eyes, or clothing. Wear rubber gloves and face safety shield while servicing batteries. **DO NOT INGEST!** This will result in severe bodily injury.
- Wear a full face shield when working on or around batteries. A full face shield will help protect your eyes from battery electrolyte. If battery electrolyte gets in your eyes, immediately flush your eyes with large amounts of water and seek medical attention.
- Wear heavy duty long rubber gloves when working on or around batteries. If battery electrolyte gets on your skin, immediately flush with large amounts of water to prevent chemical burns.
- Explosive mixtures of Hydrogen gas are present within battery cells at all times. Do not work with or charge batteries in an area where open flames (including gas furnace or water heater pilots), sparks, cigarettes, or any other sources of combustion are present. Always provide ample ventilation in rooms where batteries are being charged. Failure to do so may result in severe bodily injury and/or property damage.
- Lead is poisonous. Batteries and battery terminals contain lead and lead components. Avoid touching the battery terminals and always thoroughly wash hands after servicing the batteries.
- A battery is a live electrical source. It cannot be disconnected or neutralized. Do not drop any tool or conductive object onto the battery. A conductive object that comes in contact with the battery terminals will initiate a short circuit of the battery. This could cause the battery to explode resulting in severe bodily injury and/or property damage.
- Do not leave cables on batteries that have been removed from the vehicle. Cables left on batteries could cause a short circuit resulting in battery explosion, severe bodily injury and/or property damage.

NOTICE

- Battery electrolyte will stain and corrode most surfaces. Immediately and thoroughly clean any surface outside of the battery that the battery electrolyte comes in contact with. Failure to clean may result in property damage.
- When torquing battery hardware, use a backup wrench on the battery bolt and tighten the nut. Failure to use a backup wrench may damage the battery post.
- **DO NOT** remove the caps on a maintenance free battery. Removing the caps will damage or destroy the battery seals resulting in premature battery failure.
- Do not operate or charge a vehicle equipped with moist charged batteries until the batteries have been filled with electrolyte. Operating or charging moist charged batteries before filling with electrolyte will damage the batteries resulting in premature failure of the batteries.

Cleaning

WARNING

- 1) Refer to battery warnings at the start of this chapter.
 - 2) Place the Direction Control switch in the center “OFF” position (neutral).
 - 3) Turn the Start switch OFF.
 - 4) Place blocks under the front or rear wheels to prevent vehicle movement.
 - 5) Disconnect the battery main positive and negative cables or disconnect the main battery plug.
-
6. Dry dirt can be readily blown off with low-pressure air or brushed off.
 7. Wetness or wet dirt on the battery indicates battery acid. Using a nonmetallic brush with flexible bristles, wash the battery off with a strong solution of baking soda and hot water (one pound of soda to a gallon of water). Continue until all fizzing stops, which indicates that the acid has been neutralized. Then rinse thoroughly with clear water. DO NOT get any of the solution into the battery cells.
 8. Remove the blocks from the wheels and test drive.

Watering

Non-maintenance free batteries only.

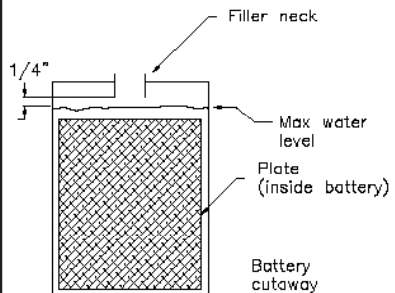
CAUTION

Do not overfill the batteries. Over filling the batteries may cause the batteries to boil over and result in chemical burns and/or property damage.

Note: The electrolyte level in a battery rises while charging and will be close to its highest level after the end of a charging cycle. It is recommended to fill the battery at the end of a charging cycle. If the electrolyte is below the top of the battery plates then fill just enough to cover the plates and then top off when the charging cycle is complete.

WARNING

- 1) Refer to battery warnings at the start of this chapter.
- 2) Place the Direction Control switch in the center “OFF” position (neutral).
- 3) Turn the Start switch OFF.
- 4) Place blocks under the front or rear wheels to prevent vehicle movement.
- 5) Disconnect the battery main positive and negative cables or disconnect the main battery plug.



6. Clean the battery. Refer to Cleaning section for information on cleaning the battery.
7. Check the electrolyte level in all battery cells. If low, fill to the correct level with distilled water using part number 77-201-00 battery filler. Never add additional battery electrolyte to the batteries.
8. Remove the blocks from the wheels and test drive.

TIRES

WARNING

Incorrect tire inflation can result in sudden failure of the tire and/or braking / steering problems leading to loss of control of the vehicle.

Never exceed the maximum pressure as indicated on the side wall of the tire. Exceeding the maximum pressure may cause explosive failure of the tire resulting in severe bodily injury.

Air pressure

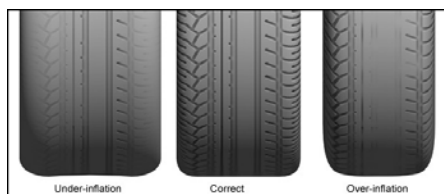
Maintaining the correct tire pressure is important to the safe operation of the vehicle as well as ensuring long tread life.

Under inflated tires result in:

- Excessive tire side wall flexing that can result in sudden tire failure.
- Excessive tread wear resulting in shortened tire life.

Over inflated tires result in:

- Tire explosion due to excessive pressure.
- Reduced road surface traction.
- Increased vibration from the road surface.
- Excessive tread wear resulting in shortened tire life.



Unequal tire inflation may result in:

- Uneven braking and loss of control of the vehicle.
- Steering pulling to the left or right.

Only check the tire pressure when the tire is cold. When checking tire pressure, you must check all tires including your spare tire.

The correct tire size and pressure can be found in the specifications list in the manual.

Note: The front and rear tires may have a different tire pressure specification.

Tire Tread Wear

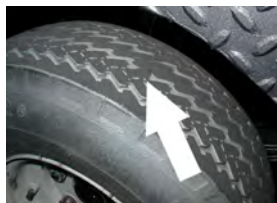
WARNING

DO NOT operate a vehicle if the cord is visible on any tire (see illustration). A tire in this condition may suddenly fail at any time resulting in loss of control of the vehicle.

It is important to periodically inspect the tread on each tire for wear. Driving with inadequate tread increases the risk of losing control of the vehicle due to hydroplaning on a wet road surface. It also increases the risk of a flat tire due to road debris. Extreme tire wear can result in sudden tire failure and loss of control of the vehicle.

Refer to the maintenance schedule in this manual for the recommended tire inspection interval.

Minimum recommended tread depth is 1/16 inch (1.5 mm). There are a series of tread depth wear indicators around the circumference of the tire. They will appear as 1/2 inch (13 mm) bands across the tread as the tire approaches its wear limit (see illustration). The tire should be replaced if any tread depth indicator can be seen or any part of the tread depth is 1/16 inch or less.



Changing a Tire/Wheel assembly

WARNING

If you have a flat tire while driving your vehicle, it is highly recommended that you slowly and carefully drive the vehicle off of any main road or highway before attempting to change the tire. Attempting to change a tire on a main road or highway exposes you to extreme danger of being run over by other vehicles.

NOTICE

The front axle must be removed to change the front wheel. This procedure should only be performed by a qualified technician.

Improper installation of the front axle will result in premature failure of the front wheel bearings.

WARNING

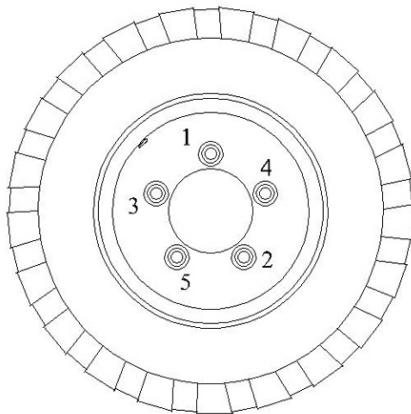
- 1) Park the vehicle on a hard level surface off of any main road or highway.
- 2) Make sure the Start switch is in the OFF position, then remove the key.
- 3) Place the Direction Control switch in the center OFF position.
- 4) Set the park brake.
- 5) Block the wheels on the opposite side of the tire to be changed.

WARNING

When lifting the vehicle, always use a hoist with lifting strap, or a jack of adequate capacity. Use jack stands to support the vehicle before starting any repairs. Failure to use lifting and support devices of rated load capacity may result in severe bodily injury.

Note: A spare tire, jack, or lug wrench is not attached to the vehicle.

6. Loosen the wheel nuts (do not remove) before raising the tire off of the ground.
7. Raise the tire to be changed off of the ground and support with a jack stand.
8. Remove the wheel nuts and tire/wheel assembly.
9. Install the replacement tire/wheel assembly.
10. Install the wheel nuts and cross tighten per illustration below to 85 foot pounds (115 Nm).
11. Check the tire for proper inflation.
12. Lower the vehicle to the ground and remove the blocks from the wheels.
13. **Wheel nuts should be checked for tightness after first 100 miles (10 Hours of operation).**



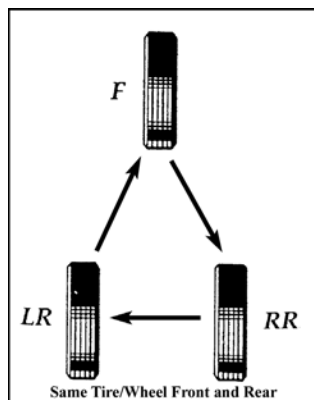
5-Bolt Pattern

Tire Rotation

Front and rear tires as well as left and right tires can wear at different rates. It is important to periodically rotate your tires to extend your tire life. Refer to the maintenance schedule in this manual for the recommended interval.

Use the following pattern for a vehicle with no spare tire:

- Right Rear to Left Rear
- Left Rear to Front
- Front to Right Rear



Replacing a Tire

WARNING

Tire replacement should only be performed by a qualified technician trained in tire replacement.

Improper tools or procedures can result in explosion of the tire/wheel assembly causing severe bodily injury or death.

WARNING

Never mix tire types, tire sizes, speed ratings, or load capacity.

Only use the tire types and sizes approved for use on this model. Contact your authorized Taylor-Dunn dealer to confirm approved tire types and sizes.

Mixing tires or installing a tire that is not approved may:

- Cause handling problems with the vehicle.
- Cause sudden tire failure due to mechanical interference.
- Accelerated tire wear and premature failure.

Any of the above may cause loss of control of the vehicle resulting in a collision or accident with severe bodily injury.

CLEANING

Seat Cushions

Clean your seats with any standard automotive vinyl cleaner.

NOTICE

DO NOT use an automated car wash facility of any type. This vehicle is not designed to fit in any automated car wash and it is likely that the vehicle will be damaged.

Exterior Body

Use any standard automotive exterior car wash solution. Do not use any abrasive cloths or cleaners.

Finish with a quality automotive wax to preserve the finish of your vehicle.

Battery Charger

The battery charger gets hot during normal operation and it is important that the cooling fins or vents are not caked with mud or dirt.

Refer to your maintenance schedule for the recommended cleaning interval.

Allow the charger to dry before starting a charging cycle.

Under Carriage

For long life, it is important to keep the under carriage of the vehicle clean from caked on dirt, mud, or road salt. Any of these substances will cause accelerated corrosion of the frame and lead to premature failure.

When cleaning the under carriage, be careful not to get any cleaning solutions or excessive water into any electrical compartments.

Batteries

Refer to the Battery Maintenance section.

Control Panel

The electrical control panel is located under the deckboard. This compartment is not sealed and requires periodic cleaning. Refer to your maintenance schedule for the recommended cleaning interval.

Remove the deckboard and use compressed air to blow out any debris.

If the control panel has been contaminated with any chemicals, mud, excessive dirt, road salt, etc., then the panel should be removed from the vehicle and thoroughly cleaned by a qualified technician.

DANGER

High Voltage is present in the control panel.

- **DO NOT touch any wiring or components.**
- **DO NOT use any liquid cleaners.**

Failure to follow these instructions will lead to severe electric shock and/or death.

Standard Specifications SC-90

ITEM	SPECIFICATION
Occupancy	Driver only, max weight 300 pounds (113 kg)
Dimensions	87.75 L x 29.50 W x 48.25 H Inches 218 L x 75 W x 122.5 H Centimeters
Deck Dimensions	29.5 x 58 Inches (75 x 147 Centimeters)
Turning Radius	67 Inches (170 Centimeters)
Weight (without batteries)	723 pounds (328 kg)
Battery Weight	248 to 432 pounds (112 to 196 kg)
Maximum Load*	900 Pounds (408 kg)
Electrical System	24 Volts (traction) 12 Volts (accessories) 375 Amp Solid State Self Diagnostic AC Motor Speed Control
Transmission	Helical Gear, Oil Bath Transaxle
Motor	3 kW AC
Maximum Speed	8 mph (12.8 kph)
Brakes	Mechanical two wheel Disc. Hand Parking Brake.
Steering	Automotive Ball Nut Worm Gear, 24:1
Tires	4.80 x 8 Load Range B
Pressure Front	50 psi (3.5 BAR)
Pressure Rear	50 psi (3.5 BAR)
Frame and Cab	Steel Unitized Frame
Instrumentation	Combination Dash Display (Battery Status Indicator, Speedometer, Hour Meter, System Status Monitor), Start Switch, Horn Switch, Direction Control Switch
Charger	Dual AC Voltage 120 volt, 50/60 Hz, 13 Amp AC 240 volt, 50/60Hz, 6.5 Amp AC 17 Amps DC

*Maximum load weight specifications includes all occupants and optional items ordered with the vehicle. Load to be centered on the cargo deck.

Specifications subject to change without notice.

Standard Specifications SC-100

ITEM		SPECIFICATION
Occupancy		Driver only, max weight 300 pounds (113 kg)
Dimensions		87.75 L x 29.50 W x 48.25 H Inches 218 L x 75 W x 122.5 H Centimeters
Deck Dimensions		29.5 x 58 Inches (75 x 147 Centimeters)
Turning Radius		67 Inches (170 Centimeters)
Weight (without batteries)		723 pounds (328 kg)
Battery Weight		248 to 432 pounds (112 to 196 kg)
Maximum Load*		1,000 Pounds (454 kg)
Electrical System		24 or 36 Volts (traction) 12 Volts (accessories) 375 Amp Solid State Self Diagnostic AC Motor Speed Control
Transmission		Helical Gear, Oil Bath Transaxle
Motor	24 volt	3.0 kW AC
	36 volt	3.5 kW AC
Maximum Speed		8 mph (12.8 kph)
Brakes		Mechanical two wheel Disc. Hand Parking Brake.
Steering		Automotive Ball Nut Worm Gear, 24:1
Tires		4.80 x 8 Load Range B
Pressure Front		50 psi (3.5 BAR)
Pressure Rear		50 psi (3.5 BAR)
Frame and Cab		Steel Unitized Frame
Instrumentation		Combination Dash Display (Battery Status Indicator, Speedometer, Hour Meter, System Status Monitor), Start Switch, Horn Switch, Direction Control Switch
Charger		Dual AC Voltage 120 volt, 50/60 Hz, 13 Amp AC 240 volt, 50/60Hz, 6.5 Amp AC 17 Amps DC

*Maximum load weight specifications includes all occupants and optional items ordered with the vehicle. Load to be centered on the cargo deck.

Specifications subject to change without notice.

Index

A		I		V	
Accidents	22	Interlock, charger	23	Vehicle Controls	
Approved Operator Position	8	Interlock Switch Inspection	40	Headlight Switch	18
B		L		Horn	18
Battery		Ladder, Using	27	Speed Switch, Hi-Low	18
Break In Period	33	Licensing	14	Start Switch	18
Cleaning	44	Liquid loads	26	Windshield Wiper Switch	18
Watering	44	Load Capacity	26	Vehicle Operation	21
Battery filler	44	M		Changing Direction	24
Battery Status	20	Maintenance		Driving	24
Bluetooth	34	Battery	43	Forward	24
C		Pre-Operation Inspection	39	Loading Cargo	26
Cargo, Loading	26	Schedule	41	Parking	25
Changing Direction	25	Severe Duty	41	Reverse	24
Charger		Maximum load capacity	26	Starting	23
Extension cords	33	Modifications	12, 13	Stopping	25
Power Source	33	O		Towing Trailers	28
Summit II	34	Operator Training	17	W	
Charger interlock	23	OPS	8	Warning icons	10
Charging Time	33	P		Web Site	2
Cleaning		Parking	25	Web site, Taylor-Dunn	2
Batteries	48	Pets	27	Windshield Wiper Switch	18
Battery Charger	48	Pets, Transporting	27		
Control Panel	48	Pre-Operation Inspection	39		
Exterior Body	48	R			
Seats	48	Regen	25		
Under Carriage	48	Regen braking	25		
Coasting	25	Regenerative braking	25		
Collisions	22	Returning to Service	38		
D		S			
Daily Inspection	39	Selecting a direction	24		
Dash Display	20	Serial Number	15		
Data plate	15	Severe Duty	41		
Dealer List	2	Signal Words			
Decals	10	Caution	10		
Diagnostic Trouble Codes	37	Danger	10		
Direction Control Switch	24	Notice	10		
Direction of travel	24	Warning	10		
Draw Bar Pull	28	Specifications	49, 50		
Driver Training	17	Speedometer	20		
Driving	24	Starting	23		
Driving in Forward	24	Start Switch	18		
Driving in Reverse	24	Stopping	25		
E		Storing	38		
Extension cords	33	Switch Operation			
F		Headlight	18		
Fault Codes	37	High/Low	18		
Find your dealer	2	Start	18		
G		T			
GFI	33	Tires			
Glossary of Terms	8	Air Pressure	45		
Ground Fault Interrupter	33	Changing	46		
H		Replacing	47		
Headlight Switch	18	Rotation	47		
Hour Meter	20	Tread Wear	45		
		Towing			
		Trailer	28		
		Vehicle	30		



WARNING

Operating, servicing and maintaining a passenger vehicle or off-highway motor vehicle can expose you to chemicals including engine exhaust, carbon monoxide, phthalates, and lead, which are known to the State of California to cause cancer and birth defects or other reproductive harm. To minimize exposure, avoid breathing exhaust, do not idle the engine except as necessary, service your vehicle in a well-ventilated area and wear gloves or wash your hands frequently when servicing your vehicle.

For more information go to www.P65Warnings.ca.gov/passenger-vehicle.

Taylor-Dunn® Mfg.
2114 W. Ball Rd.
Anaheim, CA 92804
(800)-688-8680
(714) 956-4040
(FAX) (714) 956-0504

Visit our Web site: www.taylor-dunn.com